

3.THE VISITOR EXPERIENCE

3. THE VISITOR EXPERIENCE

301 The Visitor Route

As discussed the attraction is based upon a circular route starting and finishing in the proposed Low Port car park - we have called this the 'heritage trail'. The walk across The Peel to the east entrance provides the introduction and once inside the Palace the visitor will be given an Antenna Gallery Guide System as part of the entry price.

Whilst the system allows random access, the visitor will be encouraged to take optional routes:

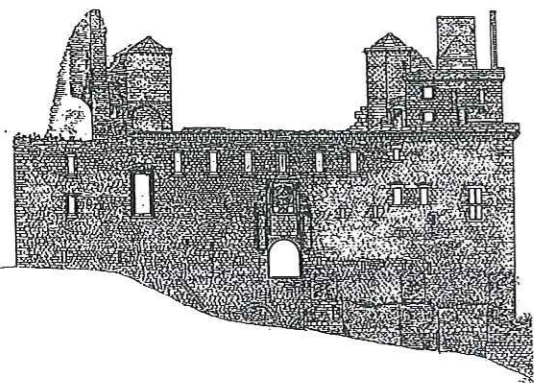
- * **the Court of James V** which is essentially a circular route of the first floor of the Palace from the south west turnpike and including the Long Gallery
- * **the workings of the Palace** - a visit to the ground floor and basement rooms starting with a sound and light show based on a model of the Palace in the pre-wine cellar area
- * **the Mary, Queen of Scots** exhibition on the second floor of the North Range.

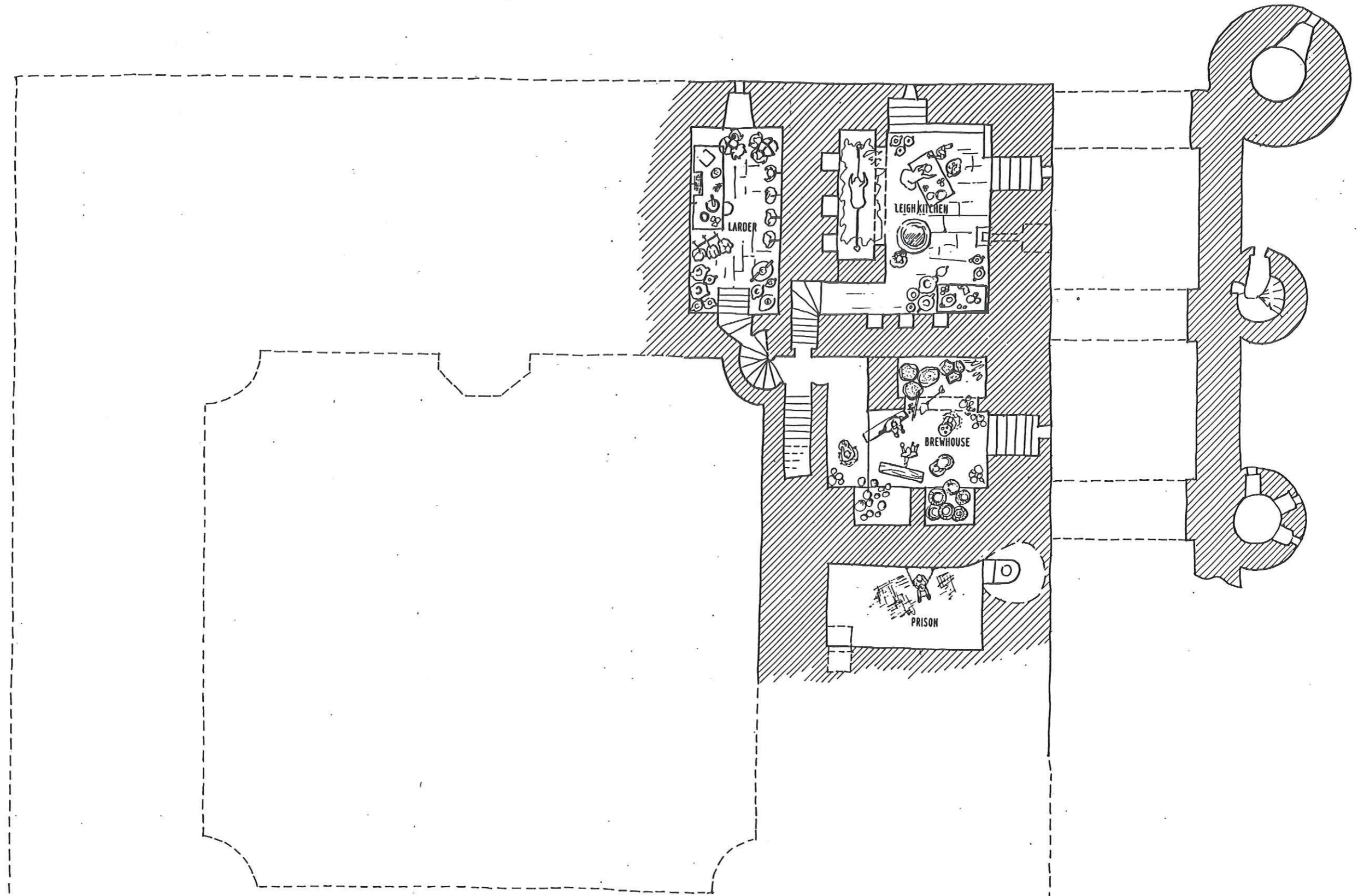
Once the visitor has exhausted the opportunities they will go back to the shop to return their Gallery Guide and leave the Palace by the South Gate. They will be encouraged to walk around The Peel before visiting St. Michael's Church and having the opportunity to enjoy its architectural splendour and tranquillity and learn a little of its history and significance with The Peel.

Visitors will then pass through the Palace Gatehouse and down Kirkgate to the Tourist Information Centre which will offer visitors additional opportunities to visit the town and the rest of West Lothian. They will then have the opportunity to walk to and fro along the High Street perhaps visiting Annet House before returning to their cars or other means of transport in Low Port.

This visitor route needs effective signage using a combination of white on brown tourism signage and pedestrian finger post signage:

- * on the M9 (both east and west directions)
- * on Blackness Road coming into the town from the east
- * at the junction into Low Port
- * at the pedestrian exit from the car park onto The Peel
- * in the vicinity of the South Gate from the Palace
- * in the vicinity of the Market Cross
- * at the station access road
- * in the vicinity of the Low Port roundabout





LINLITHGOW PALACE

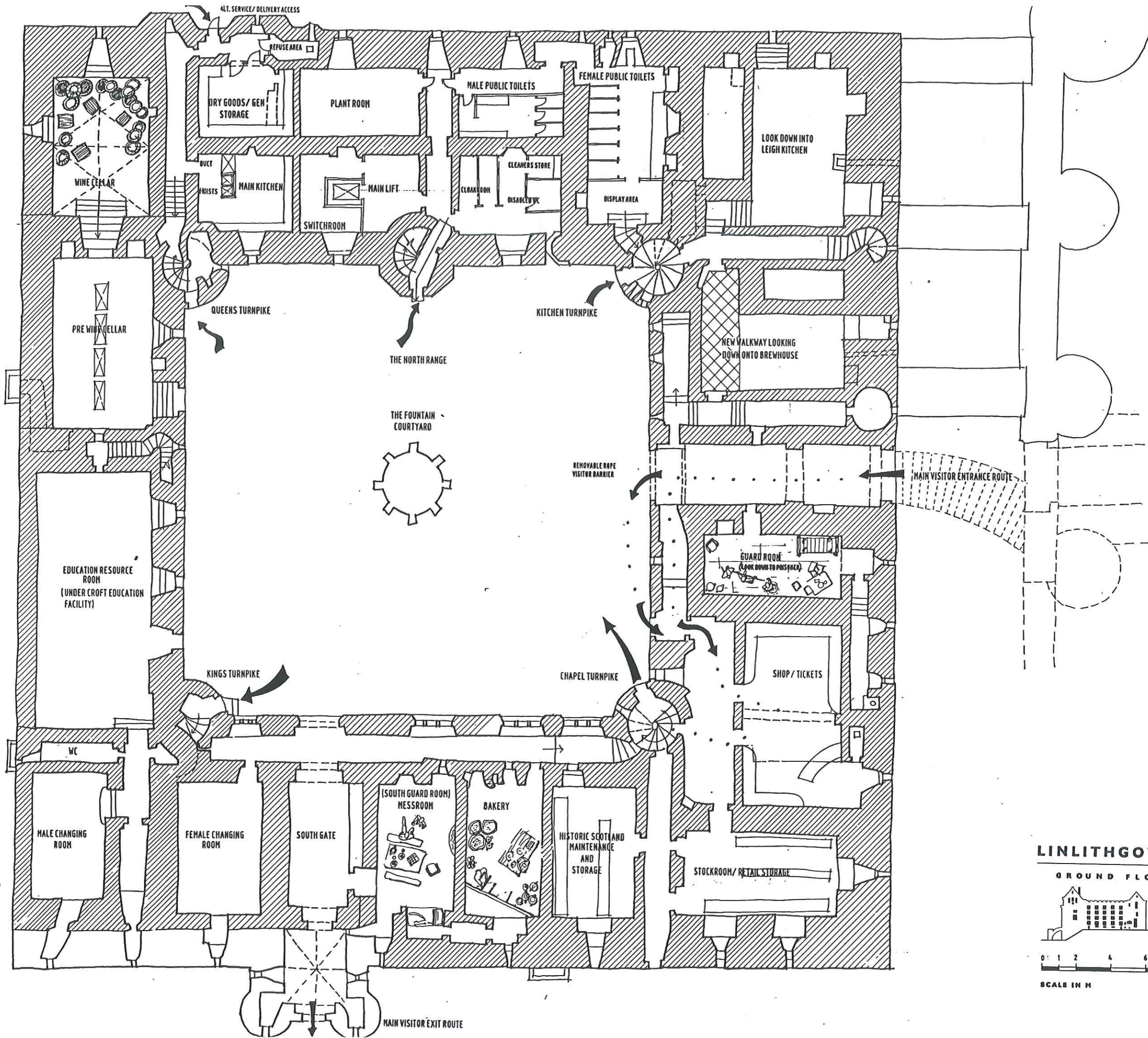
BASEMENT PLAN



HALEYsharpe
designers



SCALE IN M

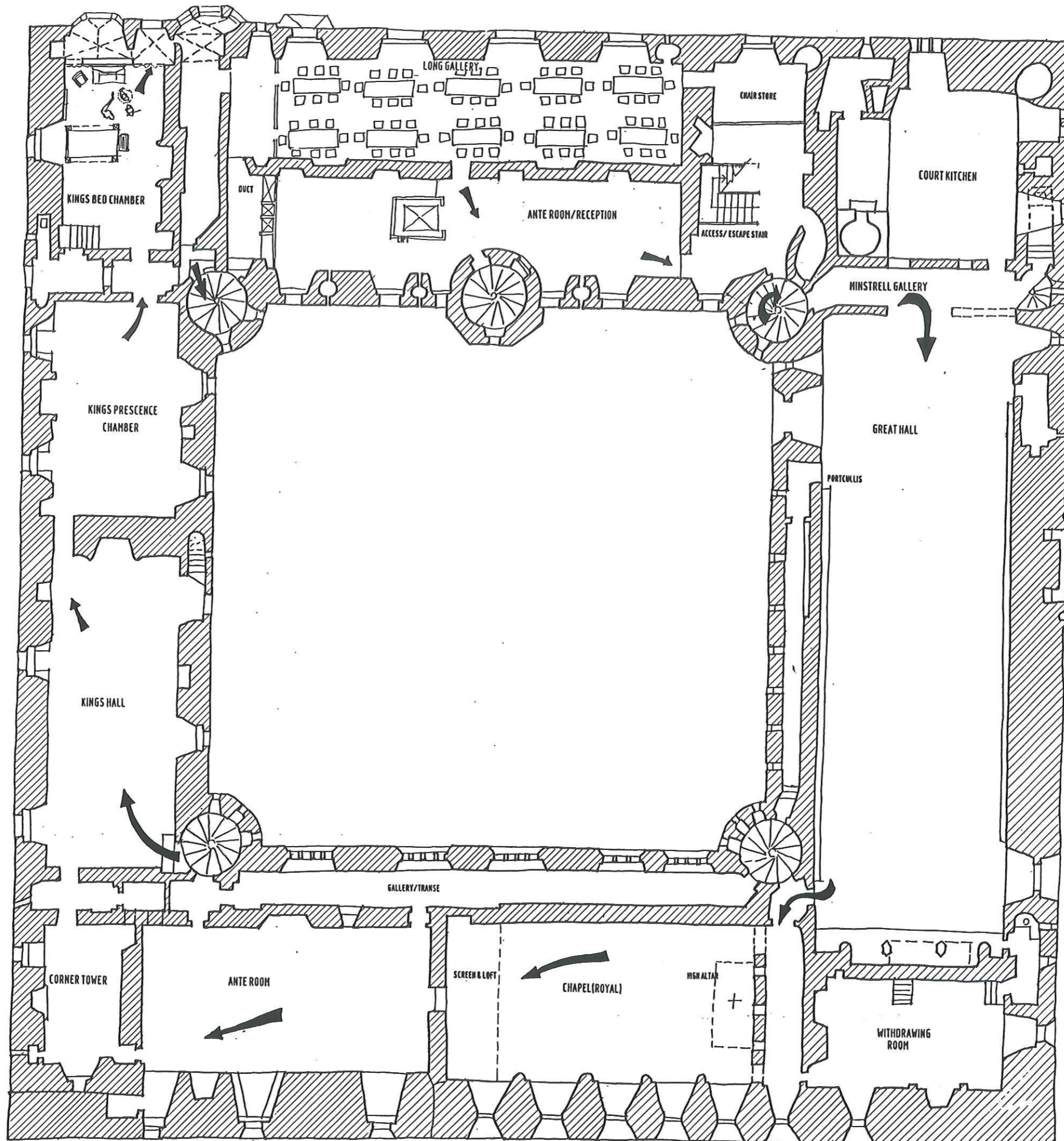


LINLITHGOW PALACE

GROUND FLOOR PLAN



SCALE IN M

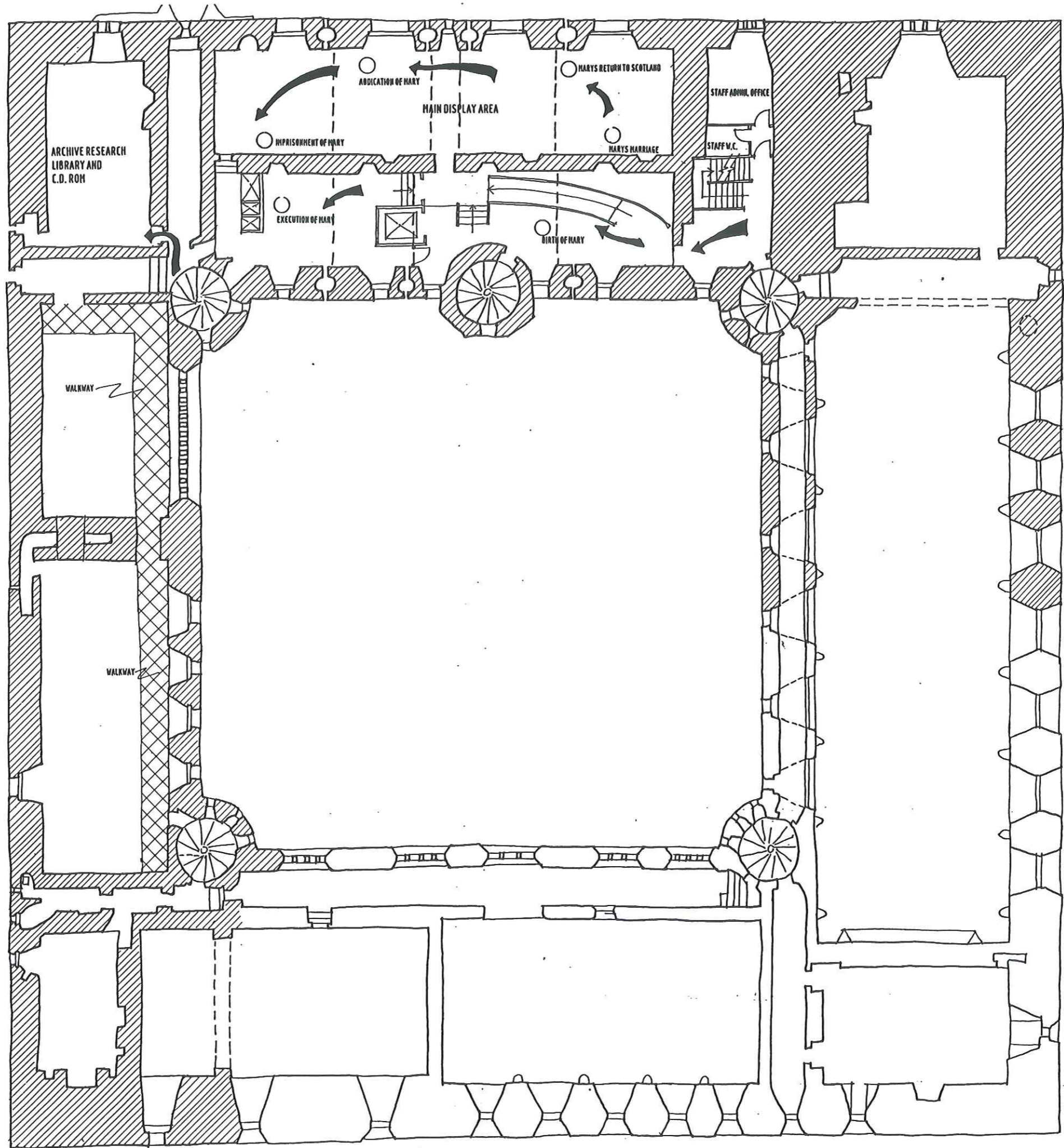


LINLITHGOW PALACE

FIRST FLOOR PLAN

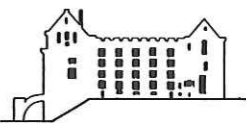


SCALE IN M



LINLITHGOW PALACE

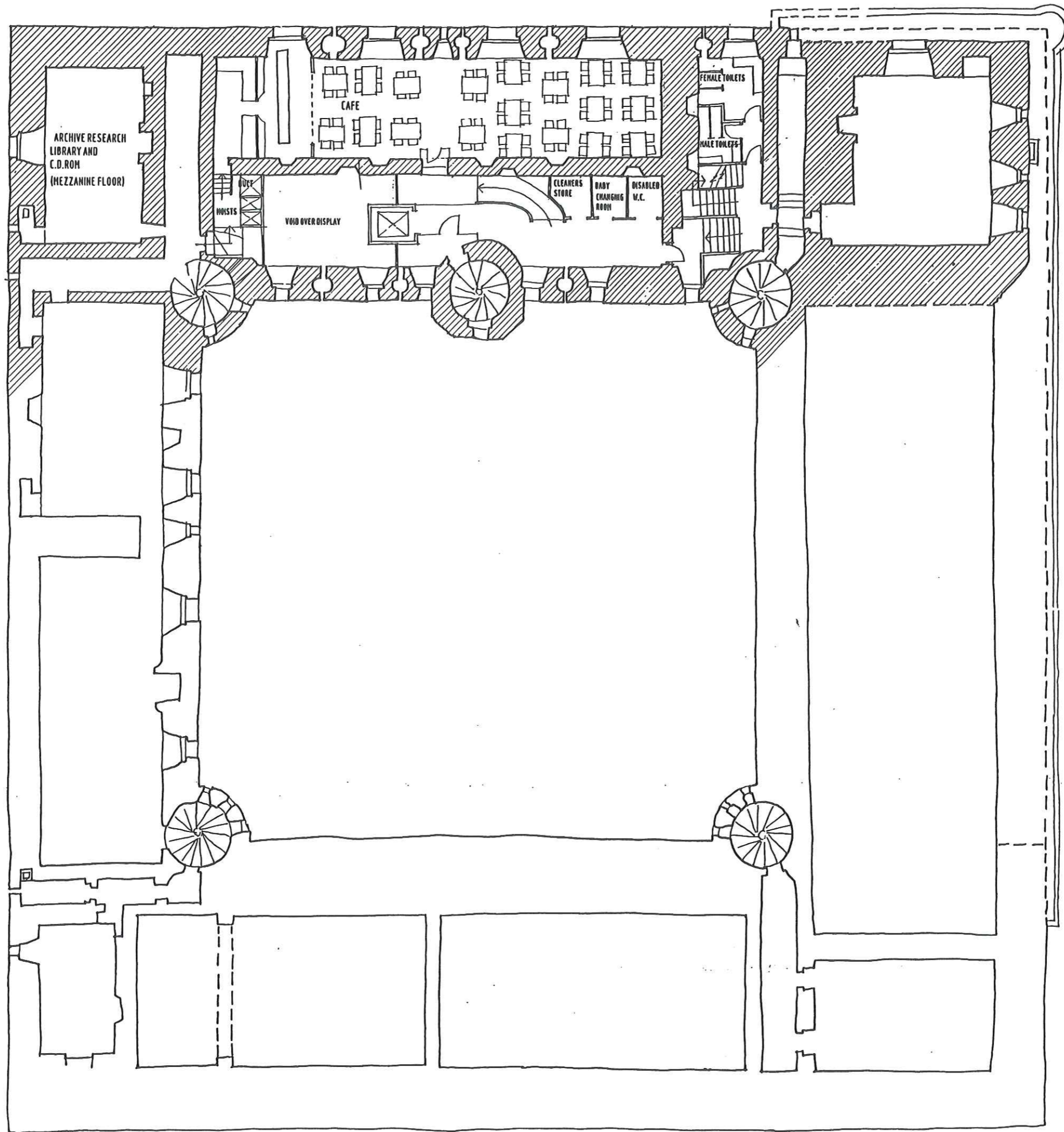
SECOND FLOOR PLAN



HALEYsharpe
designers



SCALE IN M

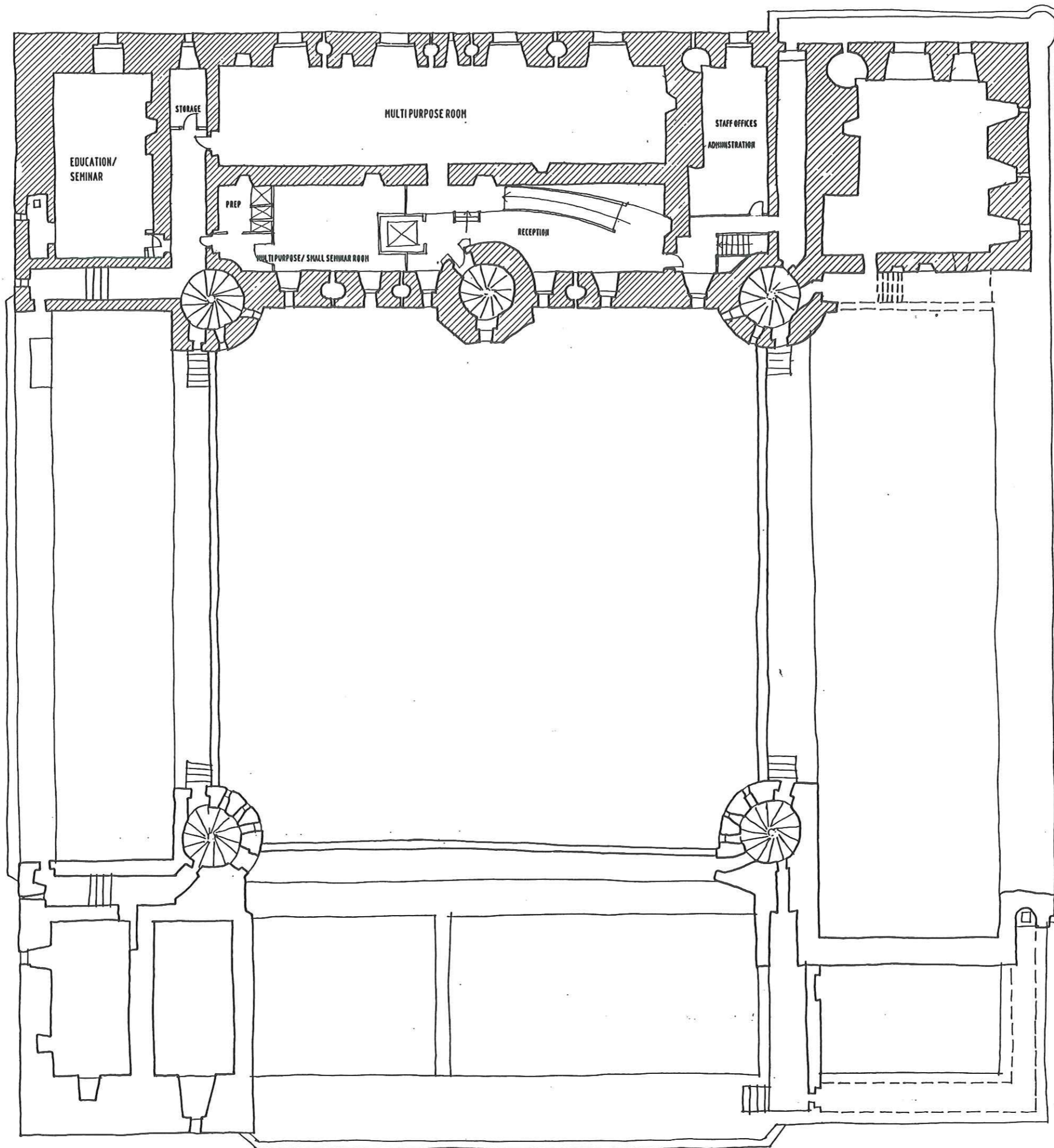


LINLITHGOW PALACE

THIRD FLOOR PLAN



SCALE IN M

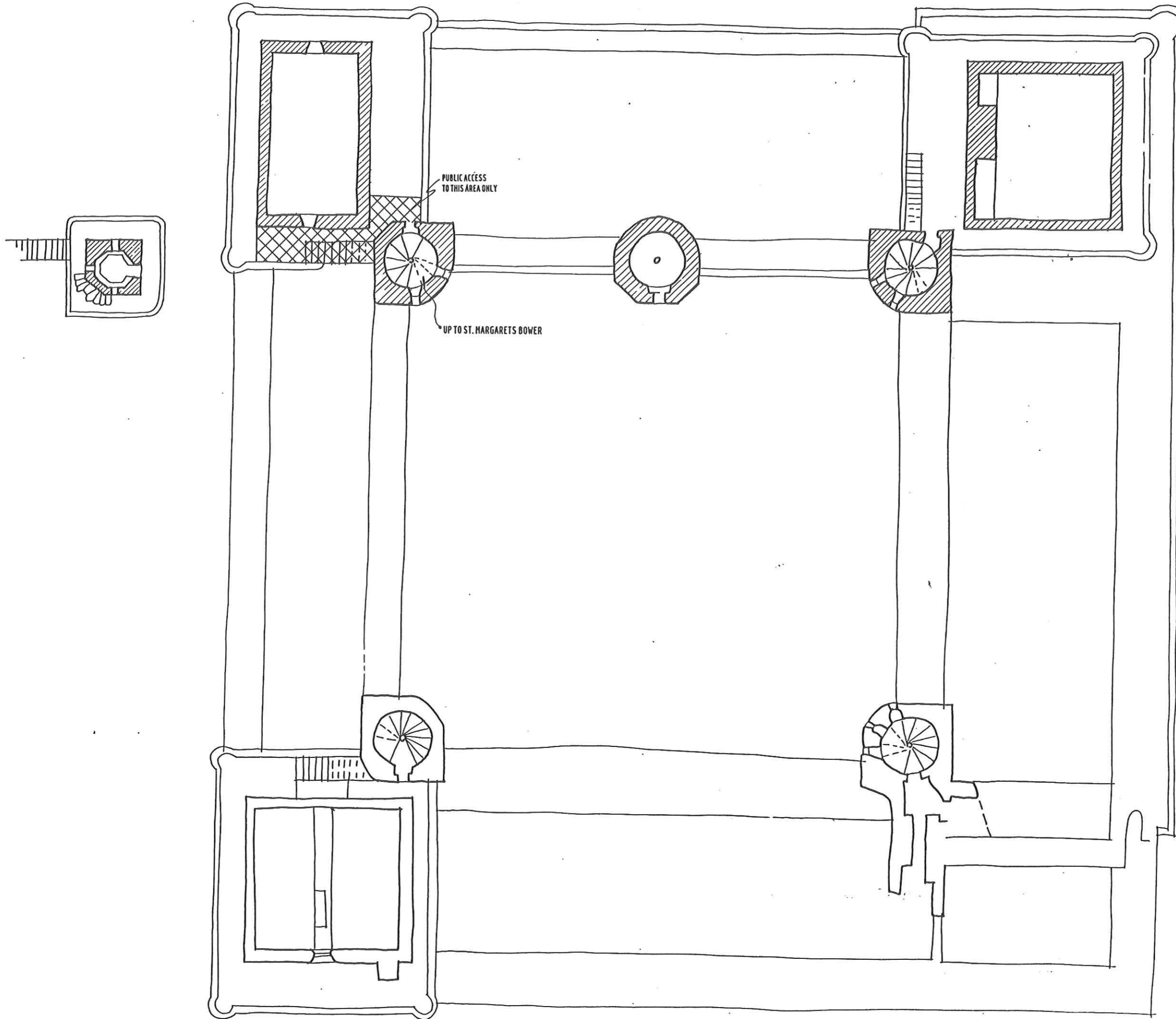


LINLITHGOW PALACE

FOURTH FLOOR PLAN



SCALE IN M



LINLITHGOW PALACE

FIFTH FLOOR PLAN



SCALE IN M

302 Interpretative Strategy

The interpretative proposals for Linlithgow Palace will establish a **unique visitor attraction** in Scotland. Multiple levels of storyline, interpretative media and experience will operate to create a visitor offer which is strongly themed yet diverse, carefully structured yet adaptable and which offers continual excitement and drama sufficient to meet the demands of different market groups and having a strong draw for new and repeat visitors throughout the year.

First and foremost, however, Linlithgow will become a **“Living Palace”**. Live interpreters will animate rooms and spaces, enact dramas and guide visitors around the Palace, bringing to life the various stories of the Stewart monarchs and life at the Palace.

303 Four Key Themes

The interpretation of Linlithgow Palace will be organised around four key themes (further details of the storylines are presented in Appendix B):

- * life at the Court of James V
- * the Stewarts at Linlithgow - the construction of the Palace
- * the House of Stewart
- * Mary, Queen of Scots.

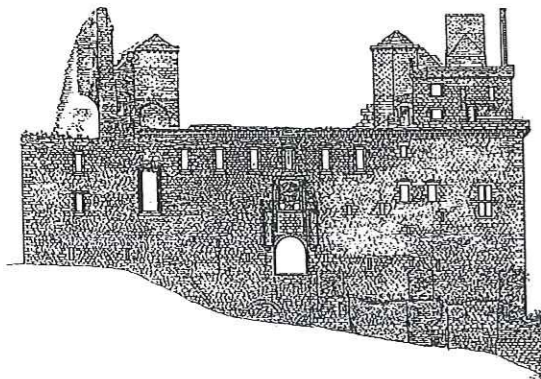
Each will be presented using different interpretative techniques and media creating distinct interpretative experiences throughout the Palace. The steps from storyline to media to interpretative experience can be charted as follows:

Storyline	Interpretative Media	Interpretative Experience
Life at the Court of James V	* recreated rooms * audio tour	* multi-sensory with sound effects, smells and music * evocative * interactive (when using live interpreters)
The Stewarts at Linlithgow - the construction of the Palace	* light & sound model * exhibition	* multi-sensory with light and sound * didactic * concise
The House of Stewart	* live interpretation * audio tour	* dramatic * interactive * hands-on * entertaining
Mary, Queen of Scots	* tableau exhibition * audio tour	* dramatic * multi-sensory

As well as offering distinct visitor experiences, the interpretation at Linlithgow Palace can, and will, operate to create two distinct levels.

At the first level, a combination of recreated rooms, audio tour, exhibitions and live interpretation (perhaps two interpreters presenting a schedule of events around the Palace) provide a wintertime “Living Palace” whose storyline concentrates on the construction of the Palace, life at the Court of James V and Mary, Queen of Scots, with the House of Stewart theme being told through the interpreters.

At the second level, operating during the busier summer time and other peak periods i.e. Bank Holidays, Linlithgow will become a “Living Palace” with a varied schedule of events adding a further dimension to life in the Court of James V and focusing particularly upon the House of Stewart - the life and reigns of Scotland’s royal family. Music and drama at weekends will enhance this still further.



304 Dressed and Recreated Rooms

A number of roofed spaces within the Palace make themselves suitable to be “dressed” to recreate how the Palace may once have looked. These rooms will be set to a period of around 1535-1542, which marks the completion of building at Linlithgow before the collapse of the North Range and its subsequent rebuilding by James VI between 1618-24.

These spaces will play a key role providing stage-sets against which the audio-tour will present stories of occurrences and events associated with life at the Court of James V. They will also become back-drops for live interpretation consisting of re-enactments and cameo performances. Contrasting with these roofed and “dressed” rooms, unroofed and therefore “undressed” spaces will allow the audio tour and interpreters to play a key role in presenting the stories of Life at the Court of James V and House of Stewart.

It is important to stress that in setting out to recreate the available roofed spaces to this period, the whole Palace plays a role in supporting the Mary, Queen of Scots Exhibition in the North Range. This creates a cohesive and unified interpretative scheme for the Palace upon which marketing and other initiatives can be based which potential markets can easily identify with and understand.

305 Audio Facility

The audio facility will be handed out to every visitor in the ticket sales area and returned to the same location by the visitor at the end of their visit. We envisage using the Antenna Gallery Guide system which provides random access to a CD(ROM) incorporating music, drama and commentary for any and every area or feature in the Palace. It is the system currently being successfully used in Edinburgh Castle.

It will operate on several levels:

- * providing an opportunity to manage visitors by initially presenting orientation and introductory information on the various interpretative options available to them namely: Life at the Court of James V audio-tour, the Stewarts at Linlithgow Palace presentation, the Mary, Queen of Scots Exhibition, the daily events programme and St. Michael’s Church
- * allow random access to the storylines of the Life at the Court of James V and the House of Stewart being accessed as the visitor moves around the Palace, through a layering of information.
- * provide tours for both adults and children. The adults’ tour may take a more factual and narrative approach whereas the children’s tour a more anecdotal and light-hearted story telling approach
- * provide foreign language tours. The choice of languages will reflect the multi-lingual system currently operating at Edinburgh Castle
- * the ability to encourage repeat visits and keep the product offer ‘fresh’ through developing new themed tours on a periodic basis
- * will operate within the Palace only - not being taken out onto The Peel.

A summary of the storylines of the Palace is presented at the end of this section. These stories particularly focus upon the occupation of the Palace dating to a period of 1535-42. The "dressed" rooms within the basement, ground floor and first floor levels will play a vital role as back-drops to these stories.

The option exists to present each story in a narrative fashion animated through music and drama. Alternatively, it is possible to present the stories in a vivid and theatrical manner whereby the voices of the different characters provide a continuity throughout the Palace. In this manner Linlithgow really does become a 'Living Palace' not only through live interpretation but also through the Gallery Guide. Details of the system are illustrated in Appendix F.

306 The Stewarts At Linlithgow: The Building Of The Palace Presentation

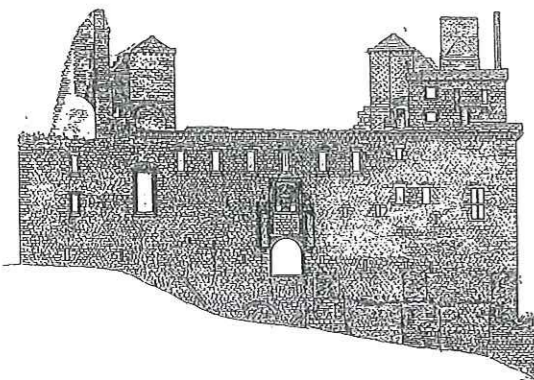
The pre-cellar area on the ground floor will be the location of a light and sound model presentation introducing the long history of the construction of Linlithgow Palace by various Stewart monarchs. A three dimensional model situated on a central dais (possibly rotating) within the room with a walkway and informal raised block seating around it on three sides (the fourth side being left at ground level for wheelchair access) will show the four ranges of the Palace. A light and audio presentation which is activated when the visitor enters the room will take the visitor through phases of construction and subsequent adaption highlighting the symbolism of the Palace.

307 Mary, Queen Of Scots Exhibition

A suite of rooms on the second floor of the North Range will be the location of the Mary, Queen of Scots Exhibition. This will take the form of a series of tableaux focusing upon key landmarks in the life of Mary, Queen of Scots, animated by mannequins and brought to life through use of lighting, sound, movement and atmospheric techniques.

It is envisaged that the Gallery Guide will provide the principal means of bringing alive the tableaux. The aim is to create a multi-sensory and engaging experience with visitors eyes focused on the tableaux, and complementary explanation being provided by **sound**. The visitor would be engulfed in a sensory experience of sight and sound. Other competing media, such as panels, should be avoided as they will detract from the "experience" and could also cause bottle-necks at busy times.

The six tableaux and associated stories and characters which comprise this exhibition are set out in the Schedule of Storylines at the end of this section.



308 The use of Costumed Interpreters an essential component of the media mix

Key to developing an innovative and unique interpretative experience at Linlithgow Palace is the use of costumed interpreters. Such an approach has been successfully developed for many years at visitor sites in the United States of America and is gradually being established in the United Kingdom at sites such as the Tower of London, Hampton Court Palace, Stirling Castle the Palace Stables in Armagh and at Inverary Jail. A number of specialist companies have been set up to provide the services of trained and skilled historian interpreters supplying the costumes and overall management. One such company is Past Pleasures and they have provided a submission (see Appendix G). These trained historians and guides will animate rooms, enact mini dramas and conduct costumed guided tours around the Palace. Although interpreters are the principal vehicle through which the wider storyline of the House of Stewart will be told their activities can also be themed within the period in which the Palace is set, 1535-1542. It needs to be appreciated that the number of unroofed spaces limits the number of dressed rooms and this, enables the interpreters to step out of the Palace "1535-1542 time capsule". The whole Palace will operate as a back-drop for live theatre through which the many and multiple layered stories of the Stewart monarchy and the long history of the building can be woven into the interpretive programme.

The programme will operate throughout the year with two interpreters maintaining a presence in the winter period, and a team of five bringing the Palace fully to life during the summer period and Bank Holidays. Maximum benefit of this core group is made by scheduling a variety of events around the Palace throughout the day, creating an impression of a lavishly interpreted "Living Palace".

Careful planning, recruitment and training will ensure that the interpreters are also able to meet the needs of foreign language provision. Quality control will be a crucial component of management to ensure that standards are maintained. Further details of the operational and cost implications are shown in Section 5, the staffing and management part of this report. A suggested series of live interpreter daily summer events within the Palace is presented overleaf.

We are conscious of the need for this team to work, and be complementary to, the costumed team of school children who currently guide visitors around the Palace. The opportunity exists to greatly enhance this service with the children and interpreters learning from the experience.



309 Events and Re-enactments

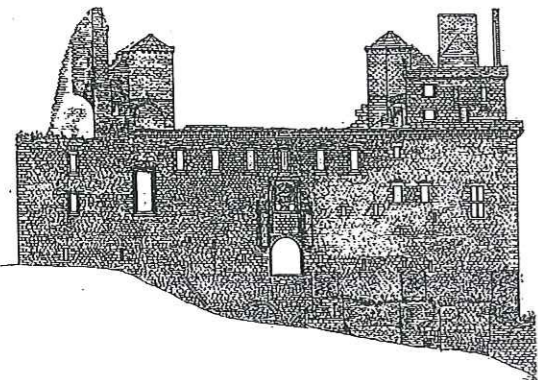
The Palace already hosts a number of events and activities including the highly professional performances of the Linlithgow Players. An additional programme of daily events, activities and re-enactments should be planned. Thus the Palace may be the location of a medieval pageant or a presentation focused around the preparations for a visit by James I and his Queen. The options for themed events are limitless and offer added value - another reason to come to Linlithgow. Such events and re-enactments should not be restricted to the Palace itself. Clear opportunities exist to hold events in "The Inner Close" and The Peel including jousts, archery contests, pageants, medieval fairs etc. An active and changing programme of events will encourage return visits to the Palace and prove to be a valuable marketing asset to increase and encourage visitor numbers in general.

In addition to historical events, the Palace has recognised the potential to become a venue for performing arts: including mime, country dancing, theatre and drama for which there are many suitable locations. St Michael's Church is a highly important and significant feature of both Linlithgow Palace and the town. Its outstanding acoustics provides the perfect venue for concerts and choral events. Jointly with the Palace they could provide an excellent 'out of town' Edinburgh Festival venue, which could offer the community of Linlithgow the benefits of this International Festival. There may also be potential for Linlithgow Palace to develop as a venue within the Edinburgh Festival, hosting appropriate "evening out" events from Edinburgh.

310 The Daily Events Programme

It will be important that visitors to Linlithgow Palace are presented with the various options available on the day of their visit. We envisage that a flyer is produced on a monthly or bi-monthly basis which presents the daily events, tours and re-enactment programme occurring during the period. Issued with their ticket upon entry, the visitor will have ready access to this information throughout their visit and can plan the elements they can enjoy within the time available (see Appendix H for the Hampton Court programme).

This flyer can also incorporate a map which plots the numbers of the various audio points throughout the Palace.



**LINLITHGOW PALACE SPECIAL
Events Today**

10.30 am-10.45	Meet the Palace cook <i>Laigh Kitchen</i>
10.00 am	Photo opportunity <i>Larder</i>
11.00 am	Costumed tour of the King's apartment <i>the King's Hall, the Presence Chamber, the King's Bed Chamber</i>
11.10 am	Demonstration <i>Bakery</i>
12.00 pm	Meet the Master Mason <i>The Inner Close</i>
1.00 pm	Life at the Court of James V <i>Great Hall</i>
1.30 pm	Photo opportunity <i>King's Bed Chamber</i>
1.30 pm	Meet the Palace Cook <i>Laigh Kitchen</i>
1.40 pm	Photo opportunity <i>Larder</i>
2.00 pm	Storytelling <i>Chapel</i>
2.30 pm	Meet the Palace Guard <i>The Mess Room</i>
3.00 pm	Music at the Court of James V <i>Great Hall</i>
3.00 pm	Photo opportunity <i>Wine Cellar</i>
3.40 pm	Costumed tour of the King's apartment <i>the King's Hall, the Presence Chamber, the King's Bed Chamber</i>
4.00 pm	Demonstration <i>Brewhouse</i>
4.30 pm	Storytelling <i>Great Hall</i>
4.30 pm	Photo opportunity <i>Bakery</i>
5.15 pm	Life at the Court of James V <i>King's Presence Chamber</i>
5.15 pm	Meet the Palace Jester <i>Great Hall</i>

311 The role of Interpretative Panels in The Peel

The access route from the car park, across The Peel to the East Entrance into the Palace presents an opportunity to introduce its history and significance through three interpretative panels. These panels would focus on the following stories:

- * the history of The Peel and its early use by Edward I during the Wars of Independence
- * the Great Council Meeting of 1371 where it was decided that Robert Stewart would be the next King of Scotland - Robert II
- * an introduction to the Palace - the earliest symbol of the Stewart monarchy, its historic entrance, materials used, where from, European architectural associations etc.

Once inside the Palace we envisage panels will be kept to a minimum. We would propose four orientation panels appropriately located at the four corners of the Inner Close adjacent to the turnpikes. These will incorporate a clear plan reinforcing the interpretation options but also discussing the history and architectural significance of the inner facades that can be clearly seen from that point.

3.12 Linlithgow Palace Guide Book

Linlithgow Palace already has an attractive guide book containing plans, full colour photographs and details of key features which is produced by Historic Scotland. We envisage this will be updated using the new graphic housestyle and reflecting and illustrating the new proposals.

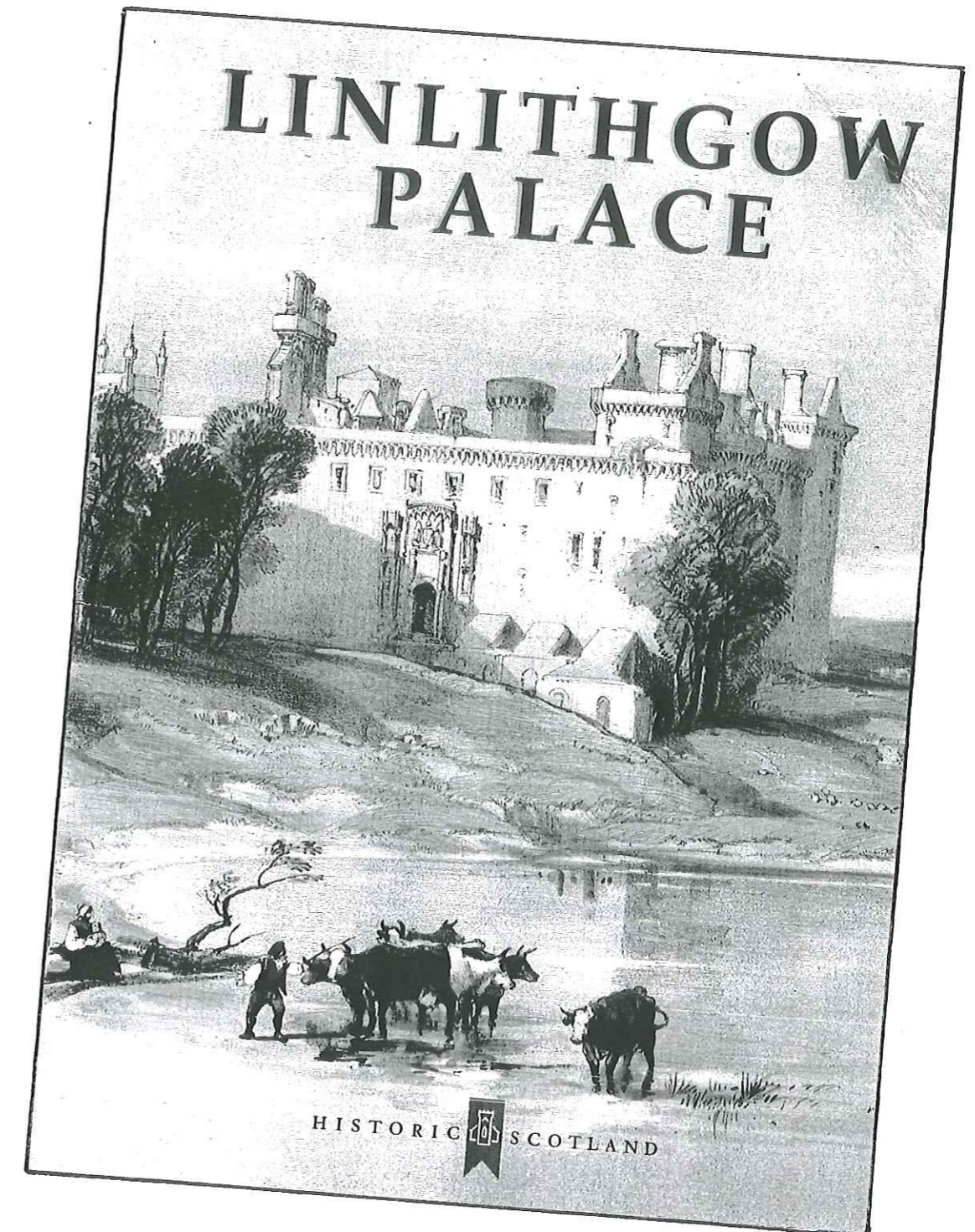
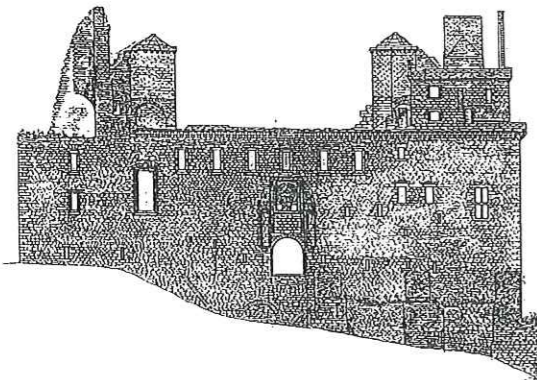
313 Interpretation And Ticketing

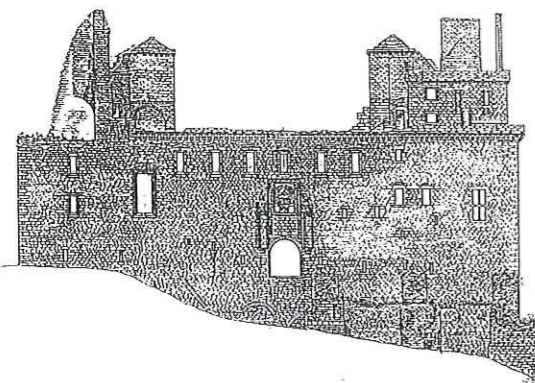
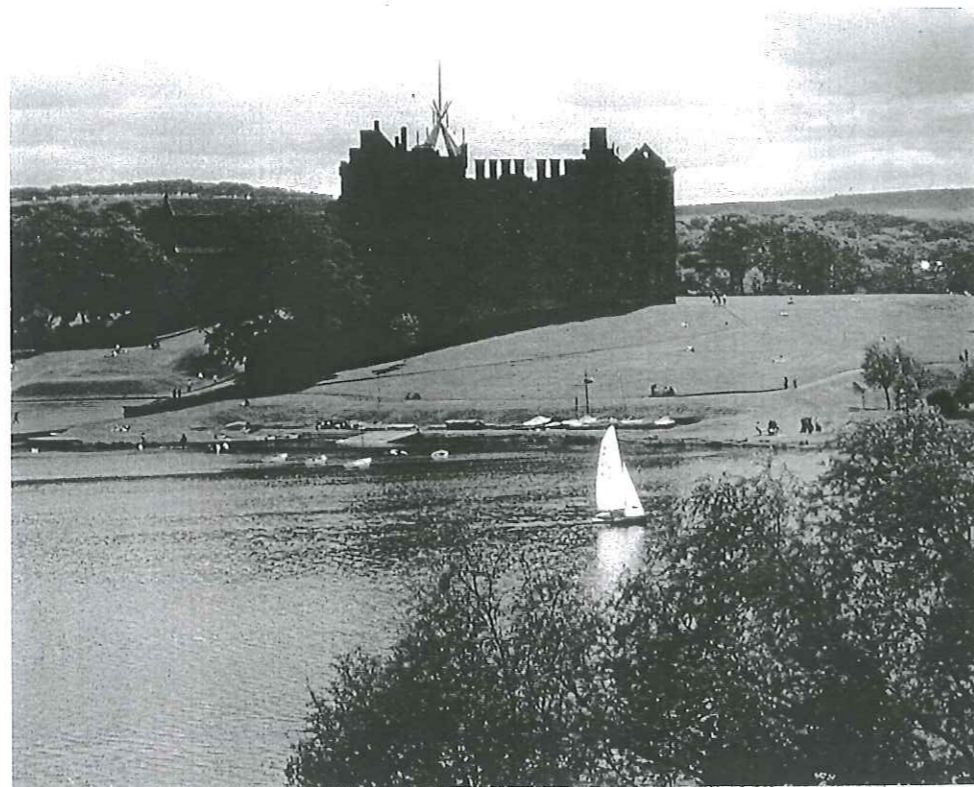
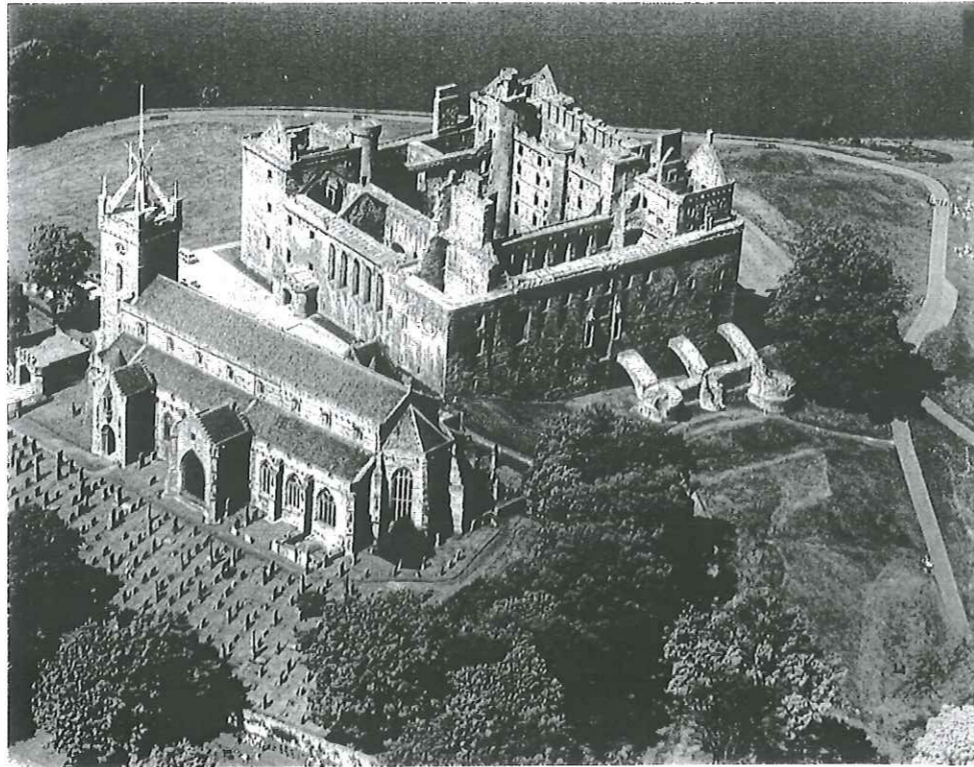
The location of the shop/ticketing area is such that it would be possible for visitors to avoid paying the admission. We would recommend a sticker being used (such as that used at the Natural History Museum in London) which, when worn on the lapel, clearly identifies those visitors who have paid. It will also enable visitors to move freely from the Palace to The Peel and St Michael's Church returning for a cup of tea and a souvenir.

314 Marker Points

A primary concern within the Palace is that of visitor orientation. Random access around the Palace demands the visitor be able to navigate their own way around. The entry points to the suite of rooms comprising the Kings Hall, Kings Presence Chamber and the King's Bed Chamber and the Mary, Queen of Scots Exhibition must be clear. In addition to the orientation panel described in 311 we recommend there should be simple fingerpost signage coupled with marker points (numbers made of wrought iron) which will be used by the audio facility to identify the key features of the Palace.

Access to Margaret's Bower via the North West turnpike stair at first floor level will also need appropriate signage to ensure that visitors are made aware of this important viewing tower.





315 St. Michael's Church

St. Michael's Church is an outstanding and important feature of the historic Peel. It should be seen as an integral part of the interpretation of the Palace and comprise a further element of the visitor offer. Although the church is currently interpreted by means of two exterior interpretative panels, further interpretative provision should be provided.

Consideration should be given to the use of a simple audio system using headphones which could plug into the rear one or two pews of the Church. These could be fitted each day without detriment to the overall operation of the church, perhaps by the lay clergy. A 10 minute dramatic production could be provided highlighting the role of the Church and its links with the Palace and Linlithgow. This technology is relatively cheap to produce, will not affect the day to day religious function and use of the Church, and provides a further fresh dimension to the presentation of the Linlithgow story. In addition, a high quality A5 publication should be available.

316 Peel Trail Leaflet

The Peel has a history as rich and interesting as the Palace itself and its "humps and bumps" both conceal and reveal a wealth of stories. In addition to the three interpretative panels which introduce the Palace and The Peel to the visitor as they make their way from the car park to the East entrance, we feel that there is a need for a Peel Trail Leaflet which would communicate and explore the stories of the Peel in more detail and tell of the formal garden once situated to the west. This would follow a simple waymarked trail around the Palace.

317 Conclusion

In this section we have summarised the concept and proposed media and discussed the visitor orientation and information which are fundamental to ensuring the visitor is given maximum guidance around the site and access to the different interpretative options available. The proposals present an original, stimulating and informative experience for the visitor and maximise the potential of the Palace and its surrounds.

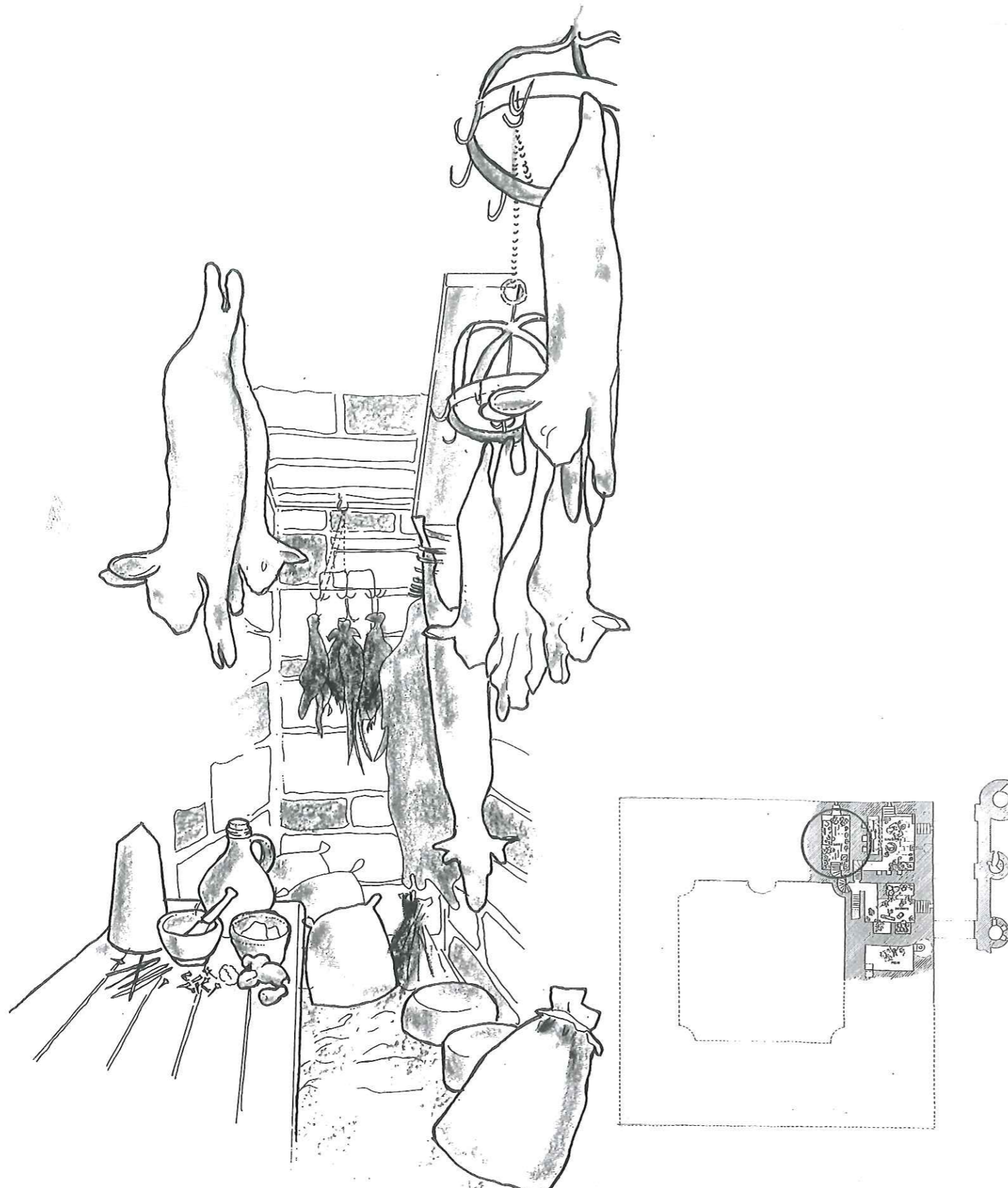
318 Interpretative Proposals : Storylines And Media

Storyline

Room Description	Larder
Basement Level	
Status: Roofed	
Theme	Food in the Palace, 1535
Associated stories and characters	<ul style="list-style-type: none"> * story of food production in the Palace, hunting in the local forest, preparation of foods - highlighting the length of time it took to prepare and preserve foods for the colder months - subsistence diet of earlier times. Locking up of larder to stop pilferage - the value of food and need to manage food stocks * story of imported foodstuffs from foreign countries during later centuries and changes in diet.

Media

Date Of Presentation	1535
Reconstruction and Furniture	* recreated larder storage area with various pots, storage jars, hung meats, cheeses, herbs, freshly killed game. Table with stool, main furniture, with evidence of checking various herbs and spices quantities. Various smells. All to be viewed from entrance only.
Lighting	* to be illuminated by candle/rush low level lighting effects (all electrical) with hidden cable runs.
Decoration	<ul style="list-style-type: none"> * specialist paint effects * walls: none * flooring: none.
Audio Facility	Yes.
Other Comment	Suitable for educational activity.

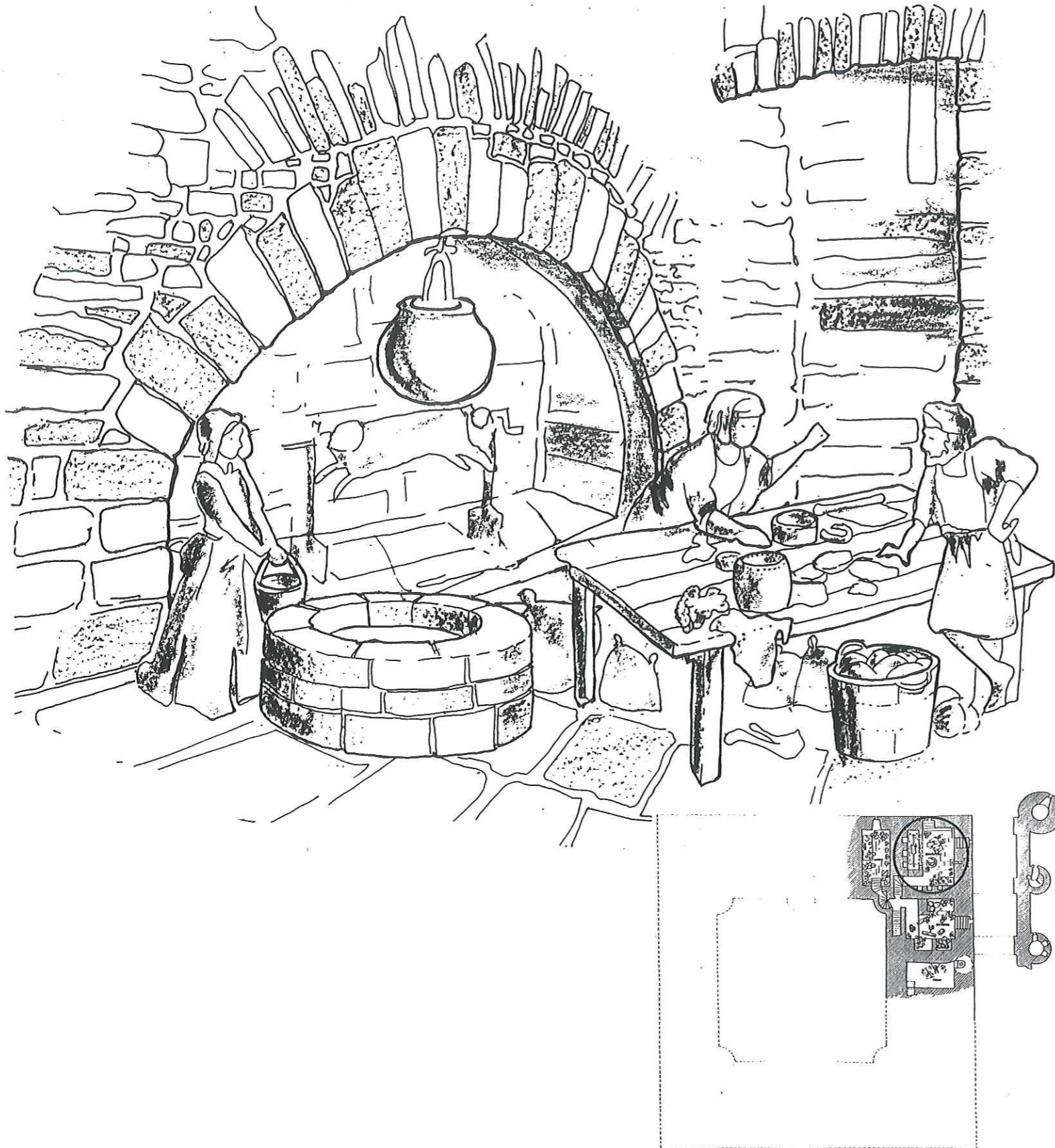


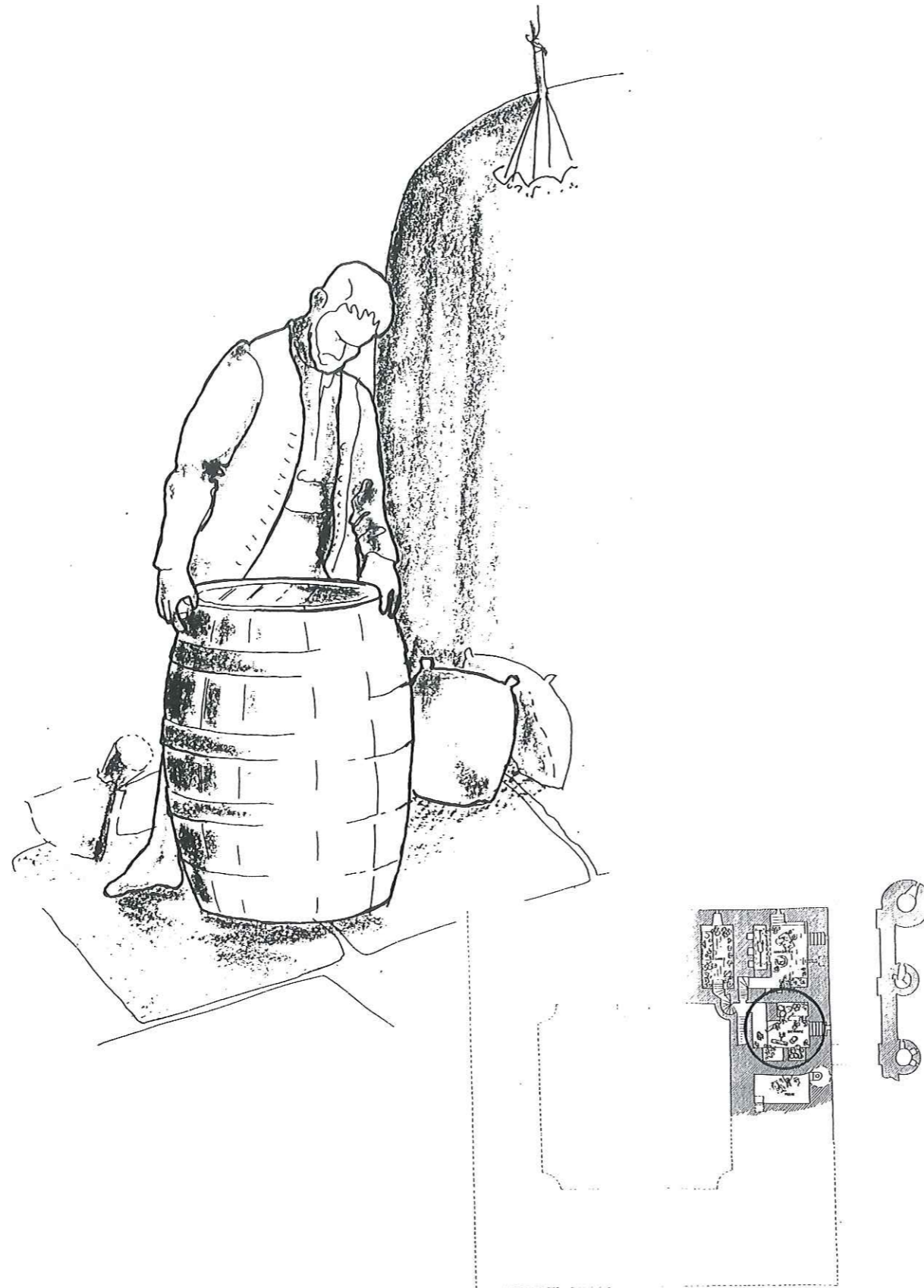
Storyline

Room Description	Laigh Kitchen
Basement and Ground Floor Levels	
Status: Roofed	
Theme	Domestic life at Linlithgow Palace during the Court of James V, 1535
Associated stories and characters	* recreated kitchen display scene
	* cooks preparing foods for the royal household discuss recipes and cooking methods highlighting past names of foodstuffs and the availability of various supplies throughout the year.

Media

Date Of Presentation	1535
Reconstruction, Mannequins and Furniture	* fitted out as a kitchen with furniture/utensils, herb jars, water pots, well to centre, and ingredients in semi disarray. A multi-sensory exhibit interpreted using fire, water, dried food and grains and fresh herbs, appropriate smells and kitchen sounds with various smells
	* a central table laden with pots, utensils and food, both prepared and unprepared, a roaring fire effect in the hearth and a roasting spit (like Hampton Court)
	* a costumed mannequin of a cook with his 2 busy servants (one male, one female)
	* animated movements - dishes bubbling etc.
	* all viewed via steps down into the centre, or from upper balcony looking down.
Lighting	* to be illuminated by candle/rush low level lighting effects including the glow from the fire (all electrical) with hidden cable runs.
Decoration	* specialist paint effects
	* walls: as existing or limewashed
	* flooring: as existing or terracotta tiles.
Audio Facility	Yes.
Other Comments	Suitable for educational activity/ live interpreters.





Storyline

Room Description	Brewhouse
Basement and Ground Floor Levels	
Status: Roofed	
Theme	Domestic life at Linlithgow Palace during the Court of James V, 1535
Associated stories and characters	* a drunken servant jokingly tells of his role as "chief ale taster" to the king - ensuring that no fouled ale goes upstairs to the royal household table.

Media

Date Of Presentation	1535
Reconstruction, Mannequins and Furniture	<ul style="list-style-type: none"> * recreate brewhouse where ale was brewed and stored with costume mannequins of: <ul style="list-style-type: none"> • the keeper of the brewhouse • 2 no. serving wenches serving drinks • 1 no. head servant with a chalice • 1 no. drunken man * furniture: 2 no. simple timber benches, brewing ingredients, sacks of grain/hops, 12 no. large barrels, 6 no. small barrels and a section of timber paddles/ shovels/ scoops and various smells * movement * all viewed from ground floor.
Lighting	* to be illuminated by candle/rush low level lighting effects (all electrical) with hidden cable runs.
Decoration	<ul style="list-style-type: none"> * specialist paint effects * walls: none * flooring: none.
Audio Facility	Yes
Other Comments	Suitable for educational activity.

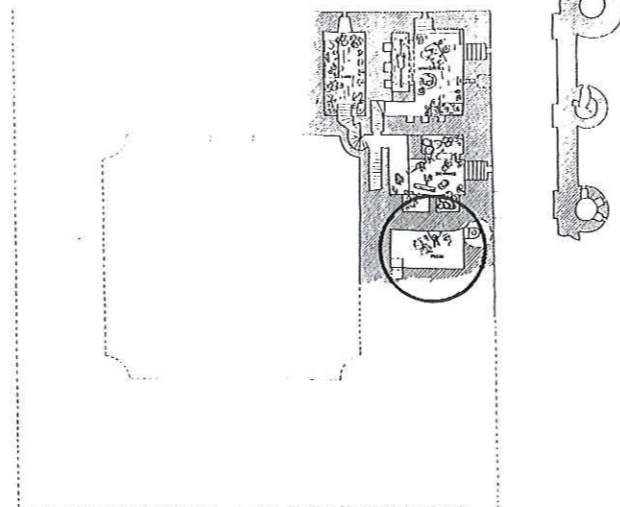
Storyline

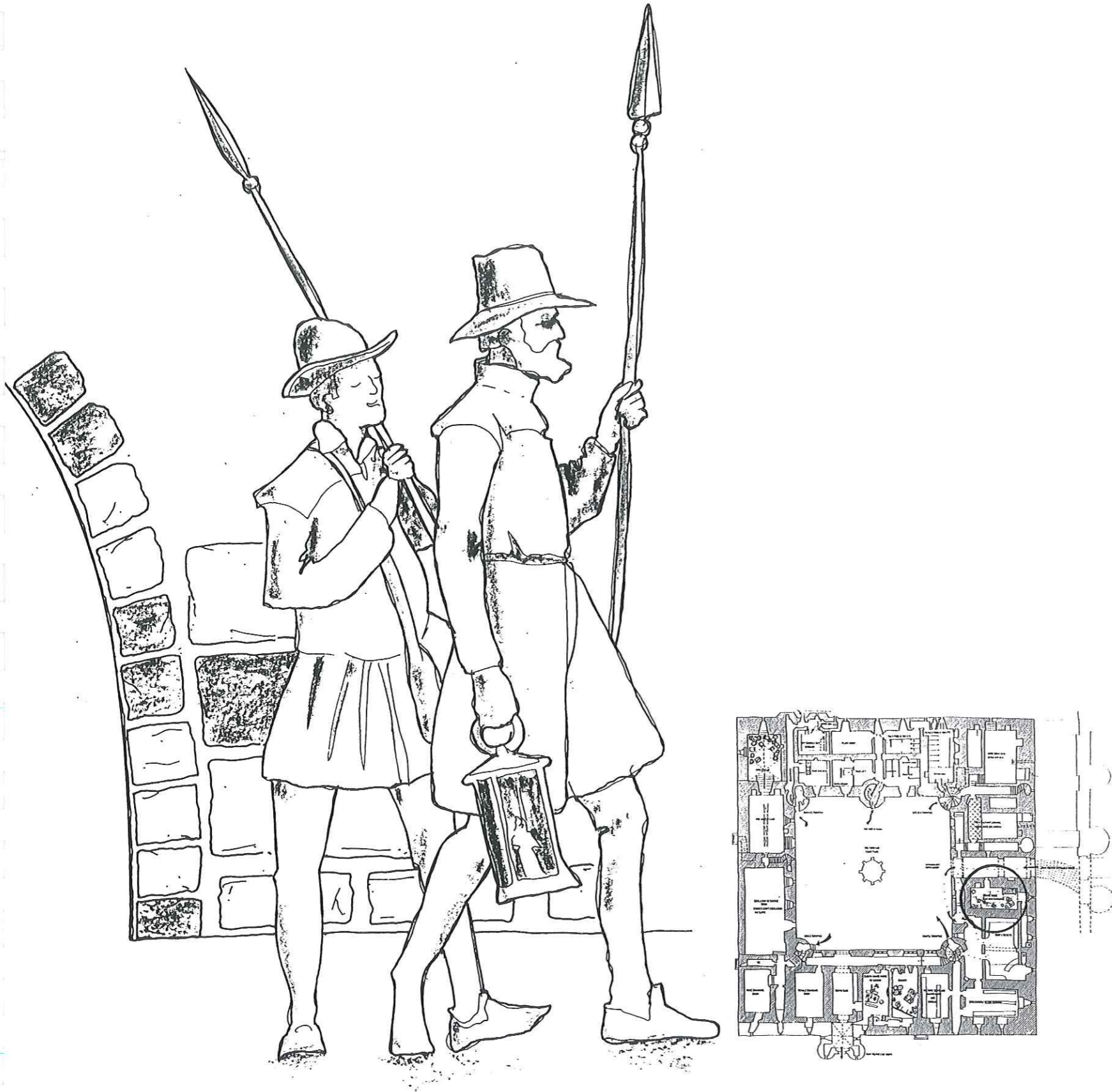
Room Description	Prison
Basement Level	
Status: Roofed	
Theme	The defensive and judicial role of the Palace, 1535
Associated stories and characters	* prisoner in shackles (subtly lit) having just received his food for the day can be used to explain the processes of discipline in Medieval Scotland.



Media

Date Of Presentation	1535
Reconstruction, Mannequins and Furniture	<ul style="list-style-type: none"> * recreate prison cell, with various instruments, chains and shackles on the wall with various instruments of persuasion * in addition a costumed mannequin of a prisoner in shackles with his meal, seated on the floor, moaning sounds * animated movement of prisoner breathing * viewed from the Guard Room above.
Lighting:	* to be illuminated by candle/rush/low level lighting effects (all electrical) with hidden cable runs
Decoration	<ul style="list-style-type: none"> * specialist paint effects * walls: none * flooring: nothing apart from some loose straw as bedding in one corner.
Audio Facility	Yes.
Other Comments	Suitable for educational activity.



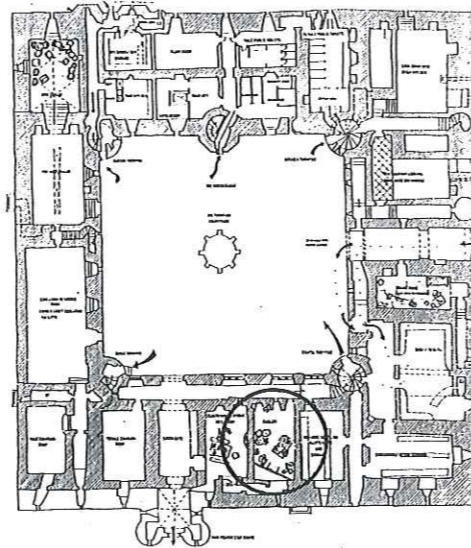


Storyline

Room Description	Guard Room
Ground Floor Level	
Status: Roofed	
Theme	Entrance to the Palace and security, 1535
Associated stories and characters	<ul style="list-style-type: none"> * recreated guard room with limited furniture - table and chairs. A separate ledger table provides a record of those having recently visited the Palace. Pikes, staffs, standards and other official apparel can be seen stored here * view to prisoner in corner of Prison below.

Media

Date Of Presentation	1535
Reconstruction, Mannequins and Furniture	<ul style="list-style-type: none"> * recreate Guard House containing limited furniture, table, chairs, etc. * view down to prisoner, moaning sound, subtle lighting * animated movement.
Lighting	<ul style="list-style-type: none"> * to be illuminated by candle/rush low level lighting effects (all electrical) with hidden cable runs * intelligent lighting system.
Decoration	<ul style="list-style-type: none"> * specialist paint effects * walls: none * flooring: none.
Audio Facility	Yes.
Other Comments	Suitable for educational activity.

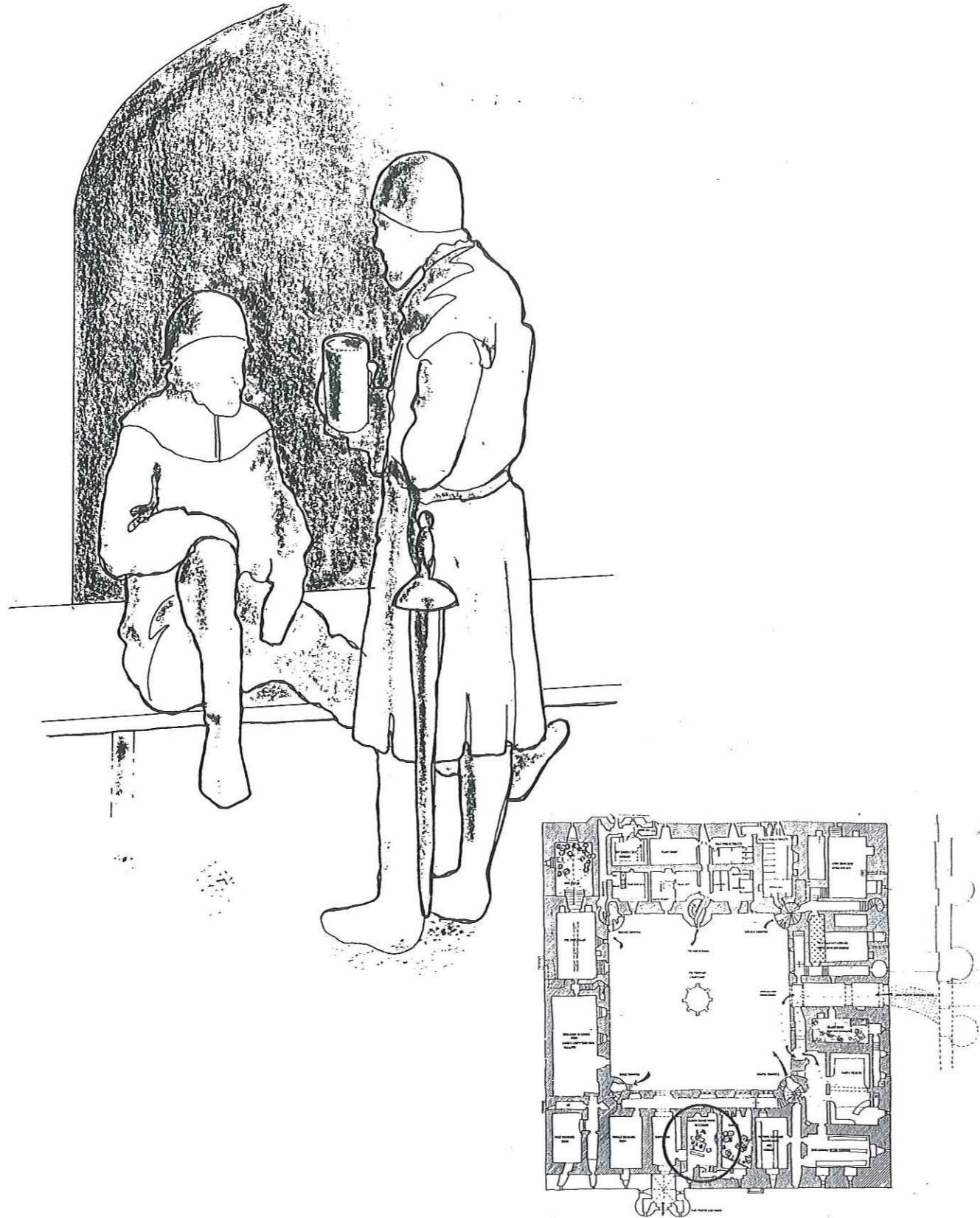


Storyline

Room Description	Bakery
Ground Floor Level	
Status: Roofed	
Theme	James V's alterations to the Palace <i>told through</i> by bakers chatting during producing the bread for the Palace, 1535
Associated stories and characters	* discussion of James V's alterations to the Palace by the baker and his assistant. Talk about the retinue accompanying the royal household.

Media

Date Of Presentation	1535
Reconstruction, Mannequins and Furniture	<ul style="list-style-type: none"> * recreate bakery interior scene with bread ovens, flour and yeast sacks, loaves of bread and the Palace cat * 2 no. mannequins, one the baker, the other his assistant, one kneeling down * various bread/yeast smells * viewed from the interior * subtle lighting from ovens and candles * animated movements.
Lighting	<ul style="list-style-type: none"> * to be illuminated by candle/rush low level lighting effects (all electrical) with hidden cable runs * integral lighting rigs.
Decoration	<ul style="list-style-type: none"> * specialist paint effects * walls: none * flooring: none apart from lots of flour and corn heads scattered liberally on floor.
Audio Facility	Yes.
Other Comments	Suitable for educational activity.



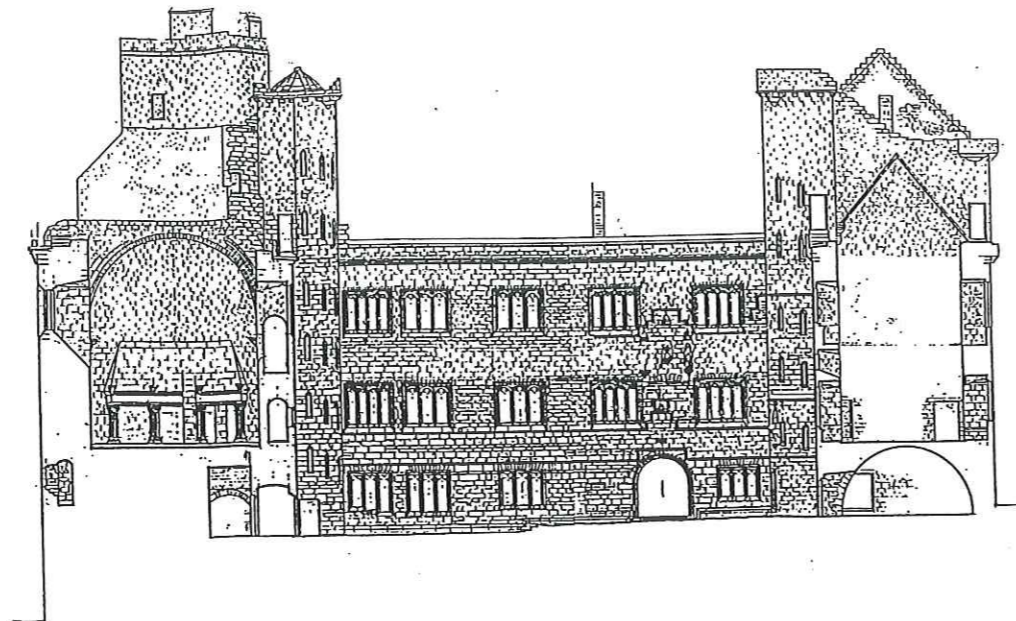
Storyline

Room Description	South Guardroom
Ground Floor Level	
Status: Roofed	
Theme	Guards in the Palace, 1535
Associated stories and characters	<ul style="list-style-type: none"> * recreated soldiers mess room. Table dressed with medieval gaming equipment, tankards and foodstuffs. Sleeping cot in the corner * discussion of patrols in the area surrounding the Palace by guard.

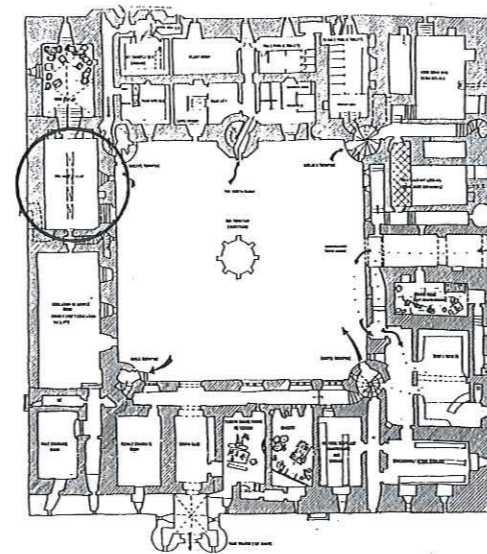
Media

Date Of Presentation	1535
Reconstruction, Mannequins and Furniture	<ul style="list-style-type: none"> * table chairs and bed tressle in corner * on the table various games, tankards and food on plates * 2 no. mannequins both dressed as guards in discussion * small fire to one corner * animated movement of object.
Lighting	* to be illuminated by candle/rush low level lighting effects (all electrical) with hidden cable runs.
Decoration	<ul style="list-style-type: none"> * specialist paint effects * walls: none * flooring: none.
Audio Facility	Yes.
Other Comments	Suitable for educational activity.

Storyline

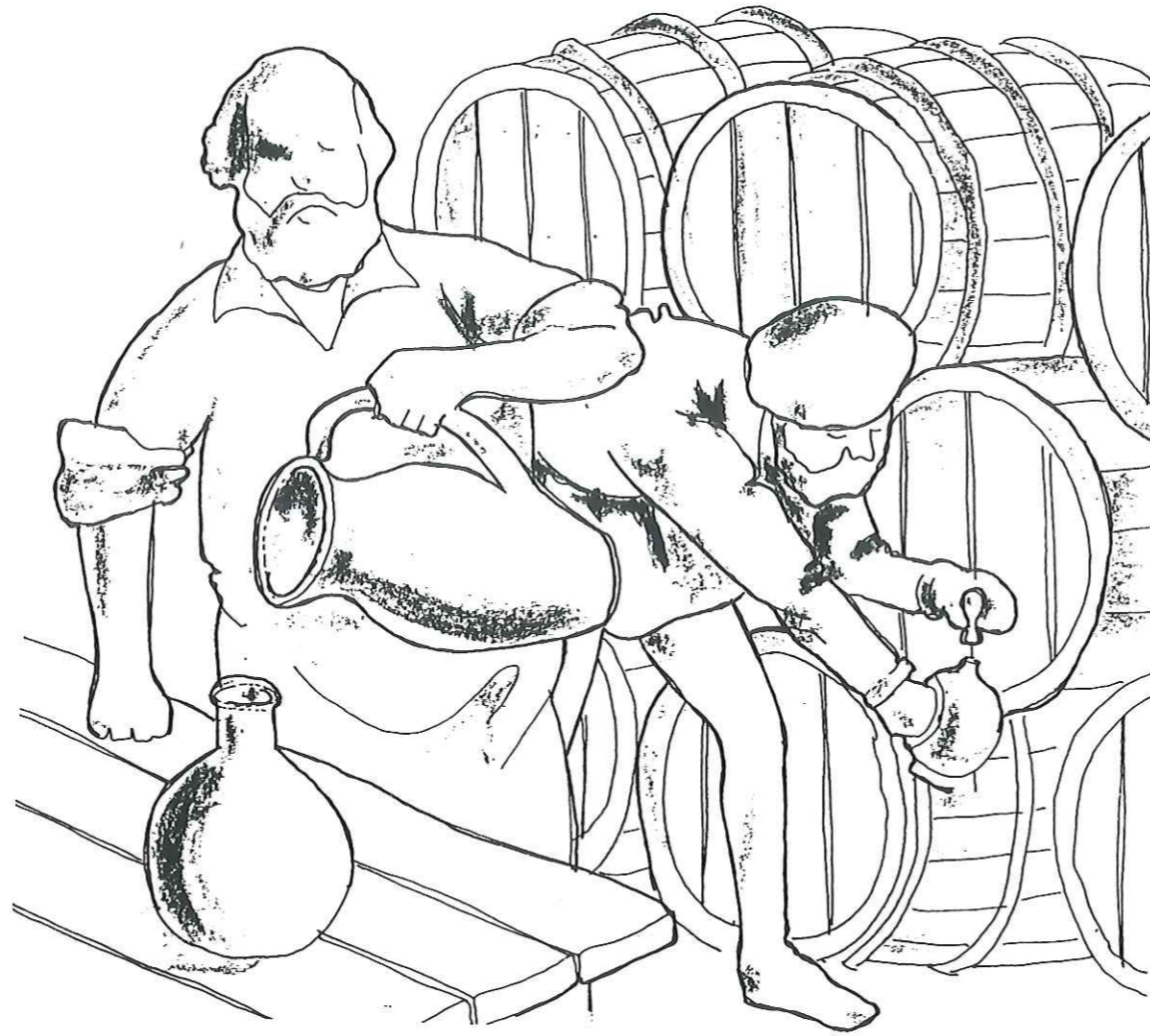


Room Description	Pre Wine Cellar Area
Ground Floor Level	
Status: Roofed	
Theme	The Stewarts at Linlithgow Presentation
Exhibition	<ul style="list-style-type: none"> * model presentation with light and sound show will present the long history of the construction of Linlithgow Palace by various Stewart monarchs, taking the visitor through phases of construction, subsequent adaption and the symbolism of the Palace. The presentation is activated when the visitor enters the room and will include: * the early 14th Century. The building of the Peel around a royal Scottish residence by Edward I during the Wars of Independence * the building of the East Wing and adjacent parts of the North and South Wings for James I (1424-37). The building of the Great Hall and East Entrance * the completion of the quadrangle and remodelling of the South Wing by James V (1488-1513). The building of the Chapel and oratory and the oriel on the north-west corner * 1534-1536. Refitting of the Great Hall and Chapel, creation of the ceremonial route up the Kirkgate through the ornamental south entrance and the construction of the fountain by James V * the rebuilding of the North Range (1618-24) by James VI Rebuilding of the North Range in the fashion of the Danish Renaissance including the Long Gallery. A affirmation of Stewart success on ascending to the throne of England .



Media

Date Of Presentation	1535
Reconstruction, Mannequins and Furniture	* 4 no. reduced scale models to the centre each recreating the above scenes (2 sided, both the same) with seating on 3 walls to enlarge room capacity.
Lighting	* illumination within models activated by sound/light show. General low level light to area (all electrical) with hidden cable runs to be option lighting.
Decoration	* walls: as existing * flooring: as existing.
Audio Facility	No. Infra-red activated sound and light show.
Other Comments	Suitable for educational activity.

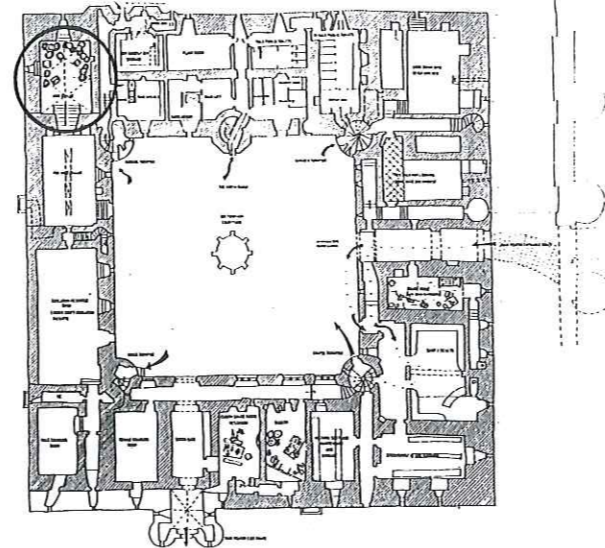


Storyline

Room Description	Wine Cellar
Ground Floor Level	
Status: Roofed	
Theme	The King's wine store, 1535
Associated stories and characters	<ul style="list-style-type: none"> * recreated wine store interior viewed through the closed door to the room * story of the King's private wine store where imported wines, mead and other drinks were kept.

Media

Date Of Presentation	1535
Reconstruction and Furniture	<ul style="list-style-type: none"> * no mannequins, but fitted out as a half stocked wine cellar with 20 no. wine barrels stacked on timber racks against the walls, various casks * viewed through doorway with barrier to stop people entering * various smells.
Lighting	* to be illuminated by candle/rush low level lighting effects (all electrical) with hidden cable runs
Decoration	<ul style="list-style-type: none"> * specialist paint effects * walls: none * floors: none.
Audio Facility	Yes.
Other Comments	Suitable for educational activity.



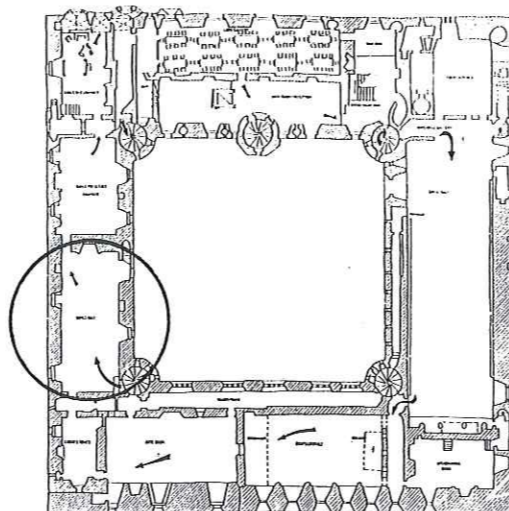
Storyline

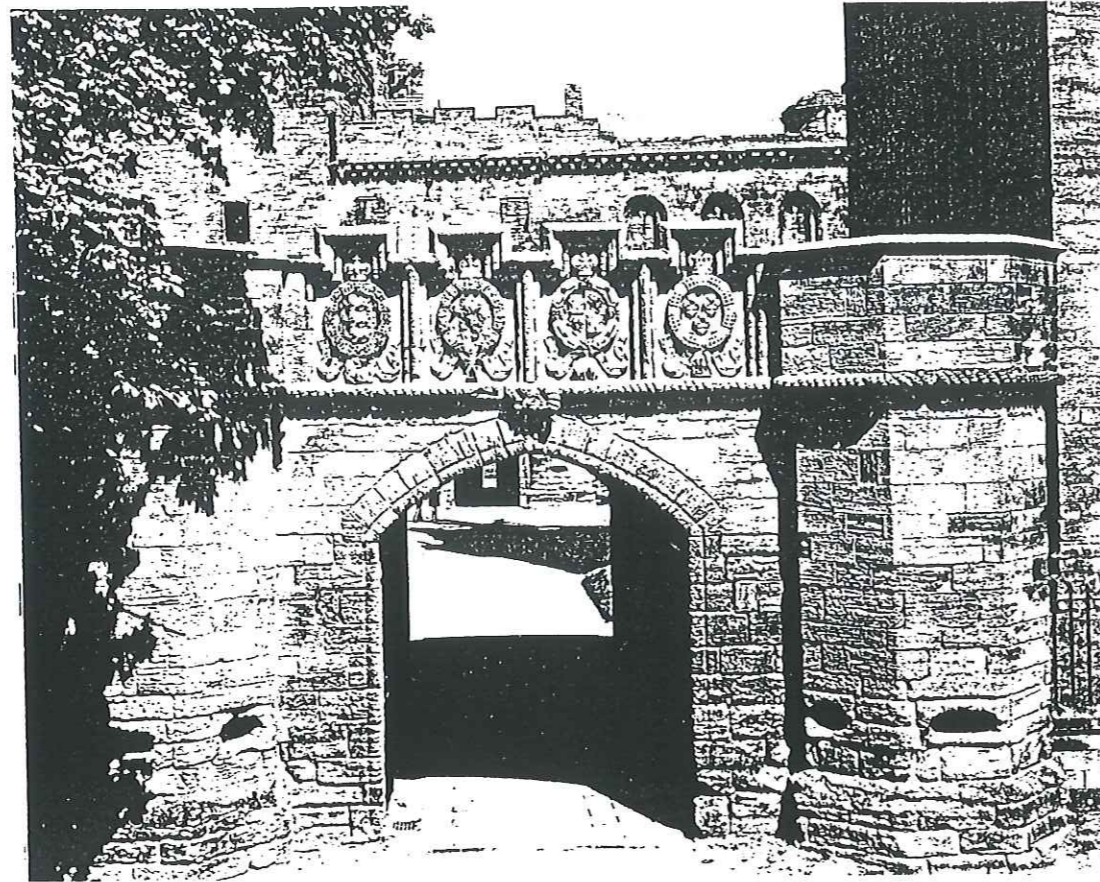


Room Description	King's Hall
First Floor Level	
Status: Unroofed	
Theme	James V - minority and early reign, 1535
Associated stories and characters	<ul style="list-style-type: none"> * retrospective discussion of James V's minority and the Regencies of John Stewart, Duke of Albany who favoured France and Archibald Douglas who was pro-English by Sir James Hamilton Finnart and Cardinal Beaton * battle fought near Linlithgow by James V to rid himself of the authority of Douglas * political and religious situation of Scotland presented through a conversation between the same two characters, including James's harsh imposition of law and order on the Borders in 1531 * European expansionist politics of James V and his mother, Margaret Tudor, sister of Henry VIII of England, and Henry's troubles with Rome. Introductory discussion regarding identifying a suitable marriage for James * discussion of the competition for James's hand in marriage continued through "listening" to the conversations of foreign ambassadors waiting to be admitted into the King's presence.

Media

Audio Facility	Yes.
Other Comments	Suitable for educational activity/ live interpreters.

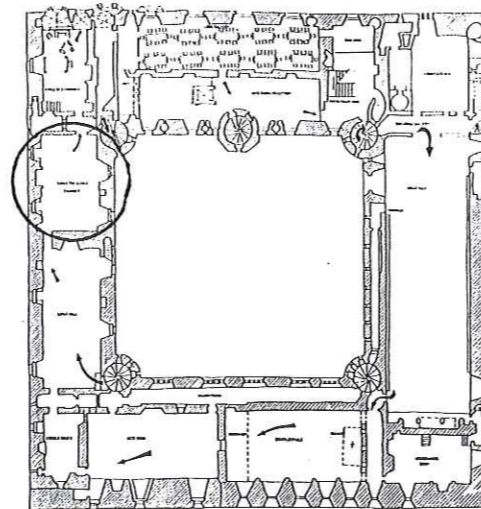




Room Description	Kings Presence Chamber
First Floor Level	
Status: Unroofed	
Theme	James V - his reign and character and marriage to Madeleine of France, late 1535
Associated stories and characters	<ul style="list-style-type: none"> * James's marriage to the French princess, Madeleine (daughter of Francis I) which provided him with a strong French alliance and a considerable dowry in the Notre Dame, Paris. Madeleine's frailty and ill health. Discussed by courtiers * James's political and economic developments and reforms in Scotland. Discussed by courtiers * James's alterations to the Palace. Discussion between the Master Mason and James about construction and costs. James insistence on the best of materials etc. Present James's views regarding his hopes for the Stewart monarchy and his vision of Linlithgow Palace as the home of a splendid Court of Honour.

Media

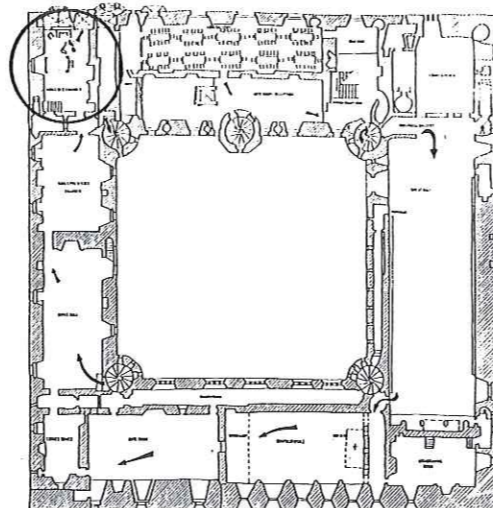
Audio Facility	Yes.
Other Comments	Suitable for educational activity/ live interpreters.



Room Description	King's Bed Chamber
First Floor Level	
Status: To Be Roofed	
Theme	The marriage of James V and Mary of Guise-Lorraine, late 1536
Associated stories and characters	<ul style="list-style-type: none"> * the death of Madeleine and James's identification of another French wife in the widow Mary of Guise, a member of powerful Guise-Lorraine family occupying key positions in the French Court and Catholic Church in France with the Duke of Guise being the Principal minister and advisor to King Henry * James's marriage to Mary of Guise-Lorraine by proxy * the rising tensions between England and Scotland - James and his uncle Henry VIII - aggravated by James's marriage to French Catholics * discussions by James V and James Hamilton Finnart.

Media

Date Of Presentation	1535
Reconstruction, Mannequins and Furniture	<ul style="list-style-type: none"> * partially reconstruct interior of the royal bed chamber with costumed mannequins of <ul style="list-style-type: none"> - King James V - James Hamilton Finnart * ornate four poster bed with blue-green tartan material, a linen/blanket chest and wall hangings and a glowing fire effect in the hearth with 2 no. chairs * viewed from doorway, temporary barrier if live interpretation to be removed * movement effects and animated movements.
Lighting	<ul style="list-style-type: none"> * to be illuminated by candle/rush low level lighting effects (all electrical) with hidden cable runs * intelligent lighting system.
Decoration	<ul style="list-style-type: none"> * specialist paint effects * walls: part oak panelled with lime plaster to wall and ceiling * floors: oak floor.
Audio Facility	Yes.
Other Comments	Suitable for educational activity/ live interpreters.



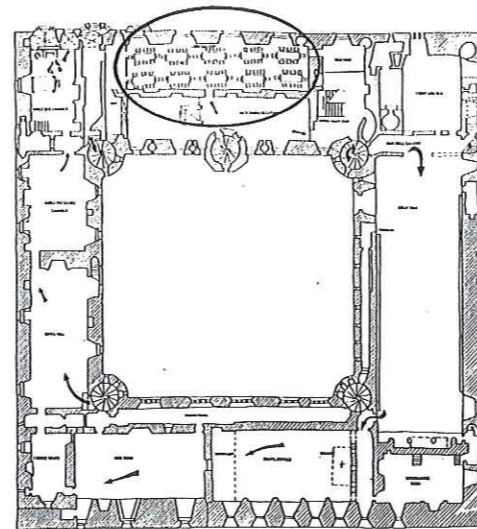


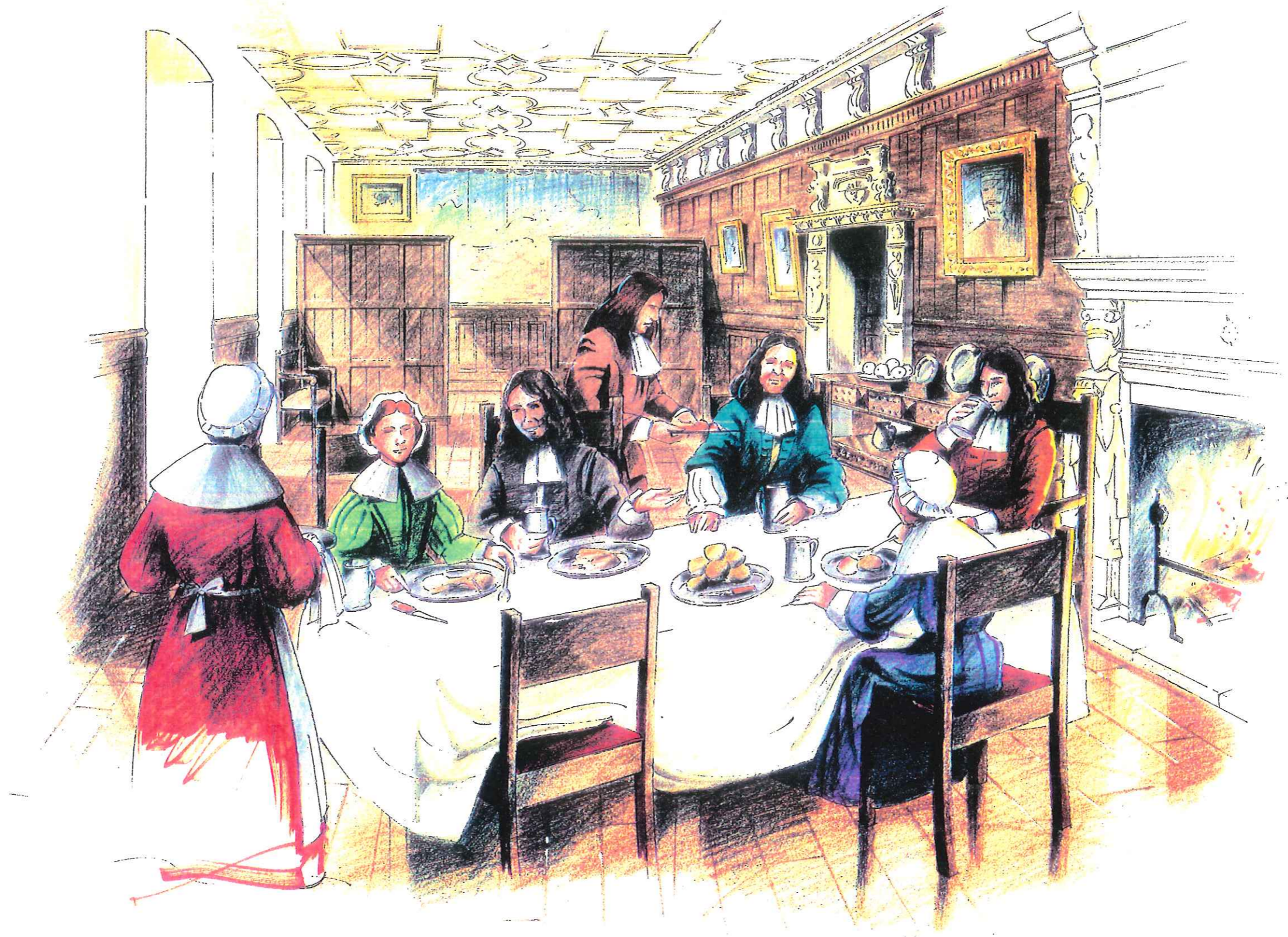
Storyline

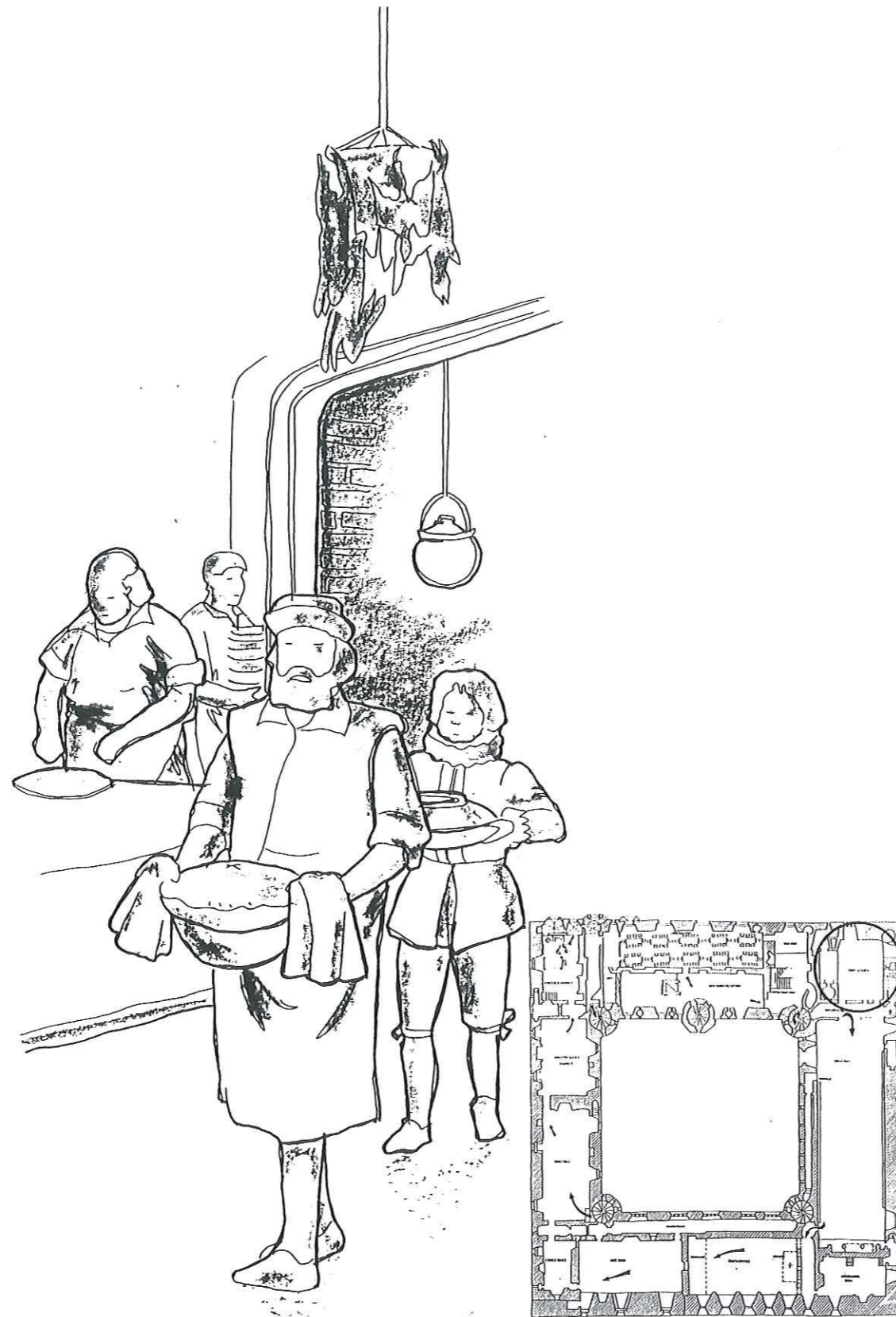
Room Description	Long Gallery
First Floor Level	
Status: Roofed	
Theme	The visit of Charles I, 1633
Associated stories and characters	* this room did not exist during the reign of James V but was created during the reconstruction of the North Range (1618-1524) by James VI and can be used to narrate the event of Charles I's visit and the banquet held in his honour in this room.

Media

Date Of Presentation	N/A
Reconstruction, Mannequins and Furniture	* the room will contain no displays in order to accommodate functions and entertainment. Refurbishment/reconstruction limited to surface decoration of walls/floor and ceiling screen and appropriate furniture).
Lighting	* general.
Decoration	* walls: oak panelling, timber cornice, above ornate plasterwork, above plaster cornice * hall tapestry to be designed and hung - could tell the story of the Stewart dynasty * ceiling : simple plaster latticework * flooring: oak floorboards, mixed widths for authenticity.
Audio Facility	Yes.
Other Comments	Suitable for educational activity and life interpreters.







Storyline

Room Description	Court Kitchen
First Floor Level	
Status: Unroofed	
Theme	Preparation for a celebration meal in the Great Hall, late 1536
Associated stories and characters	* cooks and servants preparing the numerous dishes for the celebration meal in the Great Hall. Descriptions of the extravagance of the dishes being prepared and eaten and the food stocks being used and costs involved.

Media

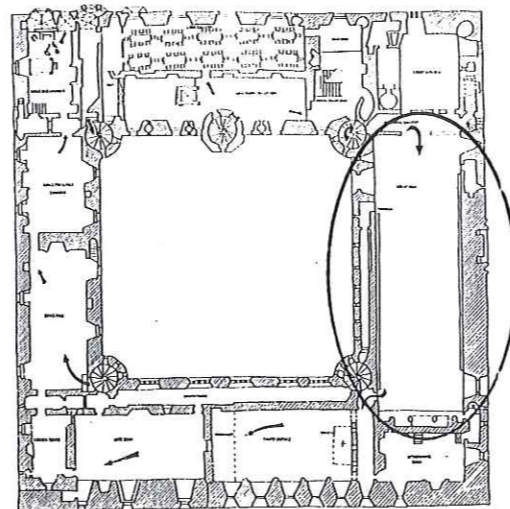
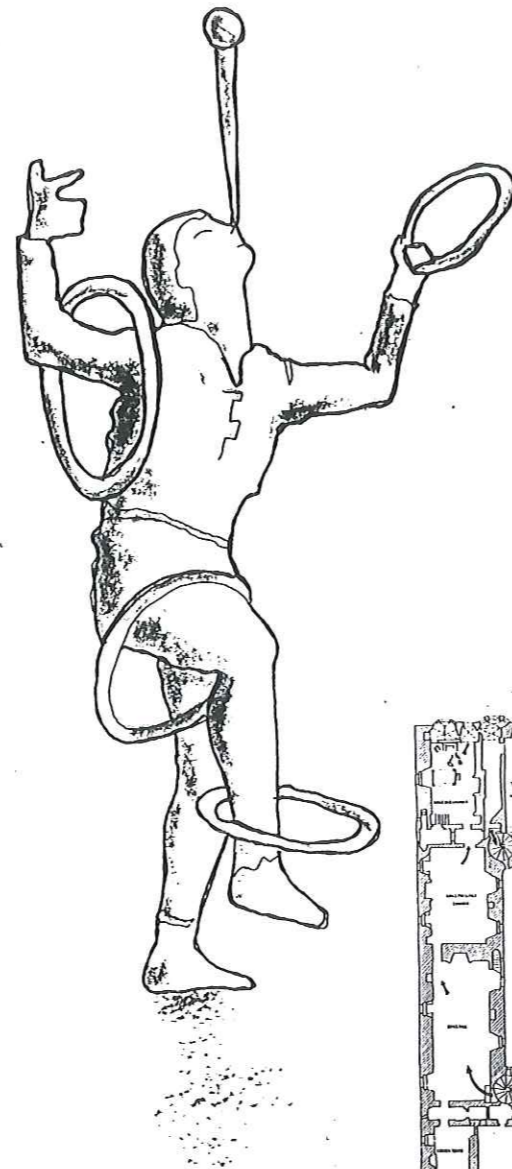
Audio Facility	Yes.
Other Comments	Suitable for educational activity/ live interpreters.

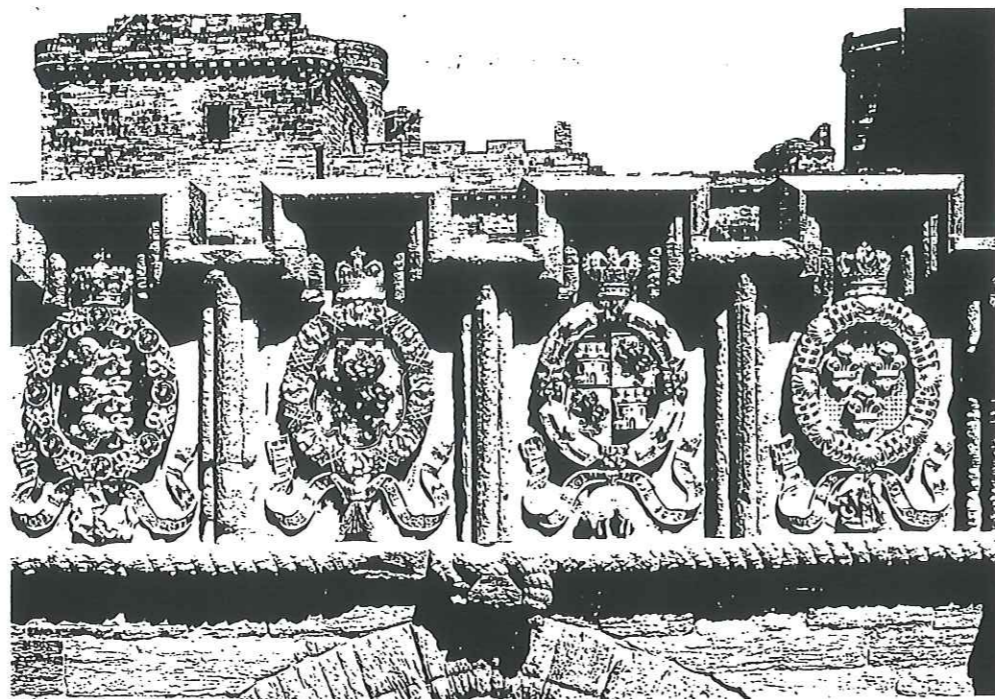
Storyline

Room Description	Great Hall (taking in the Minstrels Gallery and the Gallery)
First Floor Level	
Status: Unroofed	
Theme	Celebration of the marriage of James V and Mary of Guise-Lorraine, 1537
Associated stories and characters	<ul style="list-style-type: none"> * the Great Hall decorated in celebration of the marriage * performing players - lute players, clarsach players, a court jester, jugglers and tumblers * Mary's public complement of the beauty and graciousness of the Palace * mention of the performance of Sir David Lindsay's play "Anne Satyre of the Thrie Estaitis" in The Peel * music in the Palace * defence in the Palace - the portcullis.

Media

Audio Facility	Yes.
Other Comments	Suitable for educational activity/ live interpreters/ events/ function venue.



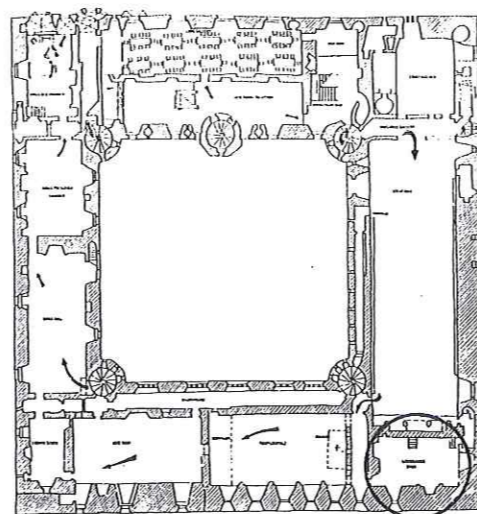


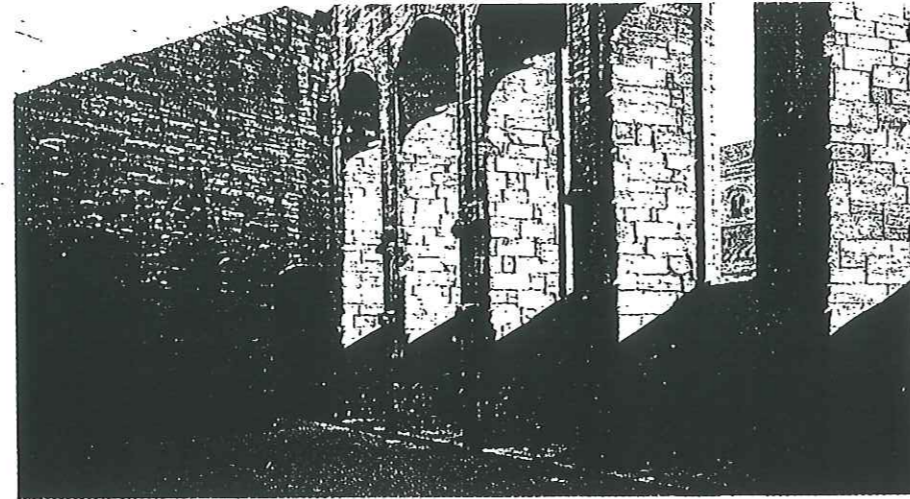
Storyline

Room Description	Withdrawing Rooms
First Floor Level	
Status: Unroofed	
Theme	The reign of James V - his character and actions, 1540/1
Associated stories and characters	<ul style="list-style-type: none"> * the later political and economic actions of James V * James's role in the execution of James Hamilton Finnart who was executed in 1540 on the order of James V who had elevated Finnart to a position of wealth and power and steadily came to distrust him. Evoke sympathy for Finnart whilst telling of his former associations as the illegitimate son of the Earl of Arran as an Angus supporter and therefore something of a turncoat in Scottish politics. Also incorporate story of the Countess of Strathmore (a Douglas) whom James had put to death in 1537 on trumped up witchcraft charges which were subsequently discovered to be false. The Countess was in fact the sister of James's step-father. Create an image of a changeable and unstable character which has linkages to his later emotional depression and decline after defeat at the Battle of Solway Moss.

Media

Audio Facility	Yes.
Other Comments	Suitable for educational activity/ live interpreters.



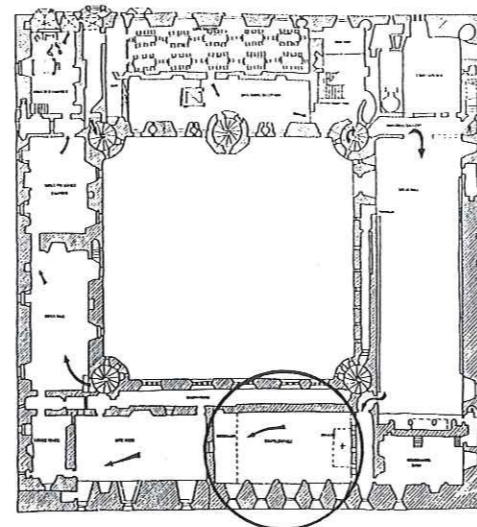


Storyline

Room Description	Chapel (including Gallery/Transe)
First Floor Level	
Status: Unroofed	
Theme	James, religion and politics, 1540/1
Associated stories and characters	<ul style="list-style-type: none"> * James's Catholic faith and its demonstration in the construction of a Chapel within the Palace discussed by two chaplains * discussion of James's political use of the Church: obtaining concessions from the Pope, taxing the Church versus his defence of the Holy Roman Church in Scotland, for example, combating heresy and banning Protestant books in Scotland * Henry VIII's attempts to gain the support and allegiance of James, his nephew. James's failure to attend the meeting arranged between the two Kings leading to Henry's invasion of Scotland.

Media

Audio Facility	Yes.
Other Comments	Suitable for educational activity/ live interpreters.



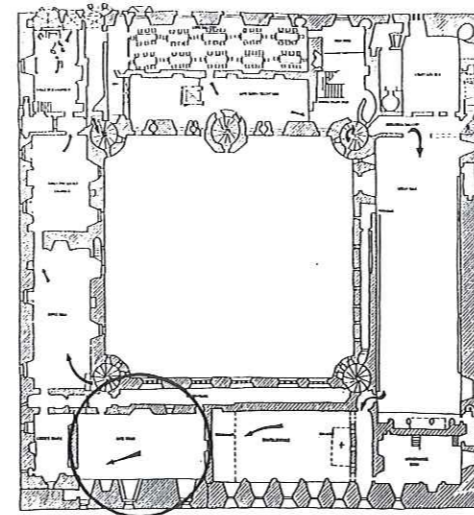


Storyline

Room Description	Ante Room
First Floor Level	
Theme	Scotland and England at war, 1542
Associated stories and characters	* invasion of Scotland by Henry VIII's troops and skirmishes discussed by two servants. Discussion of the preparations for the Battle of Solway Moss.

Media

Audio Facility	Yes.
Other Comments	Suitable for educational activity.





Storyline

Room Description	Corner Tower
First Floor Level	
Status: Unroofed	
Theme	The Battle of Solway Moss, 1542
Associated stories and characters	* engagement of James's troops at the Battle of Solway Moss where they are defeated. Discussion of his physical and mental decline at Falkland Palace and reminiscences over the death of two infant son heirs. Discussion of expectancy of the confinement of Mary of Guise, and the imminent birth of a new Stewart heir and monarch for Scotland.

Media

Audio Facility	Yes.
Other Comments	Suitable for educational activity.

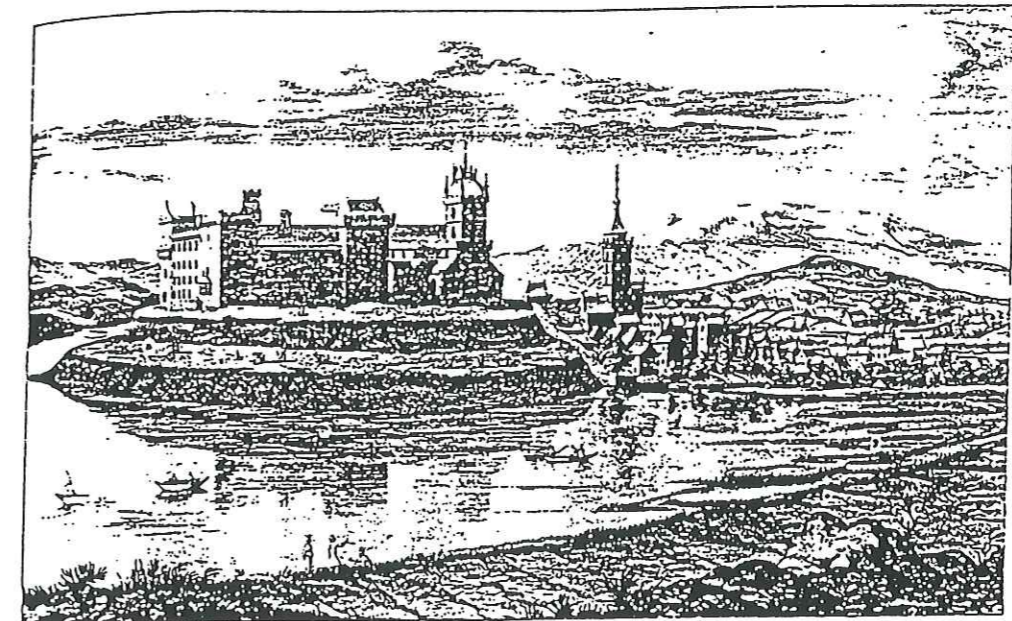
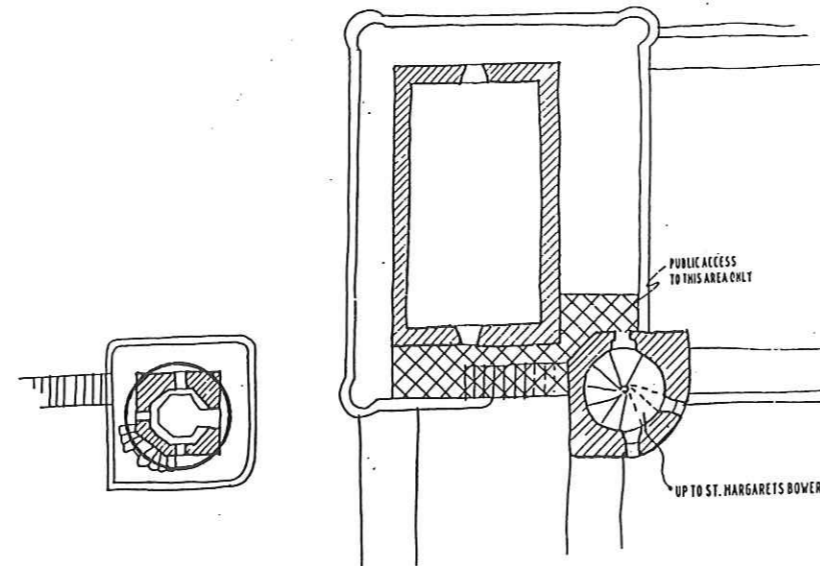


Storyline

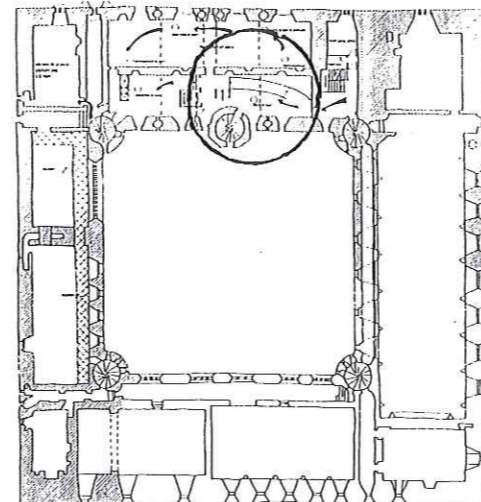
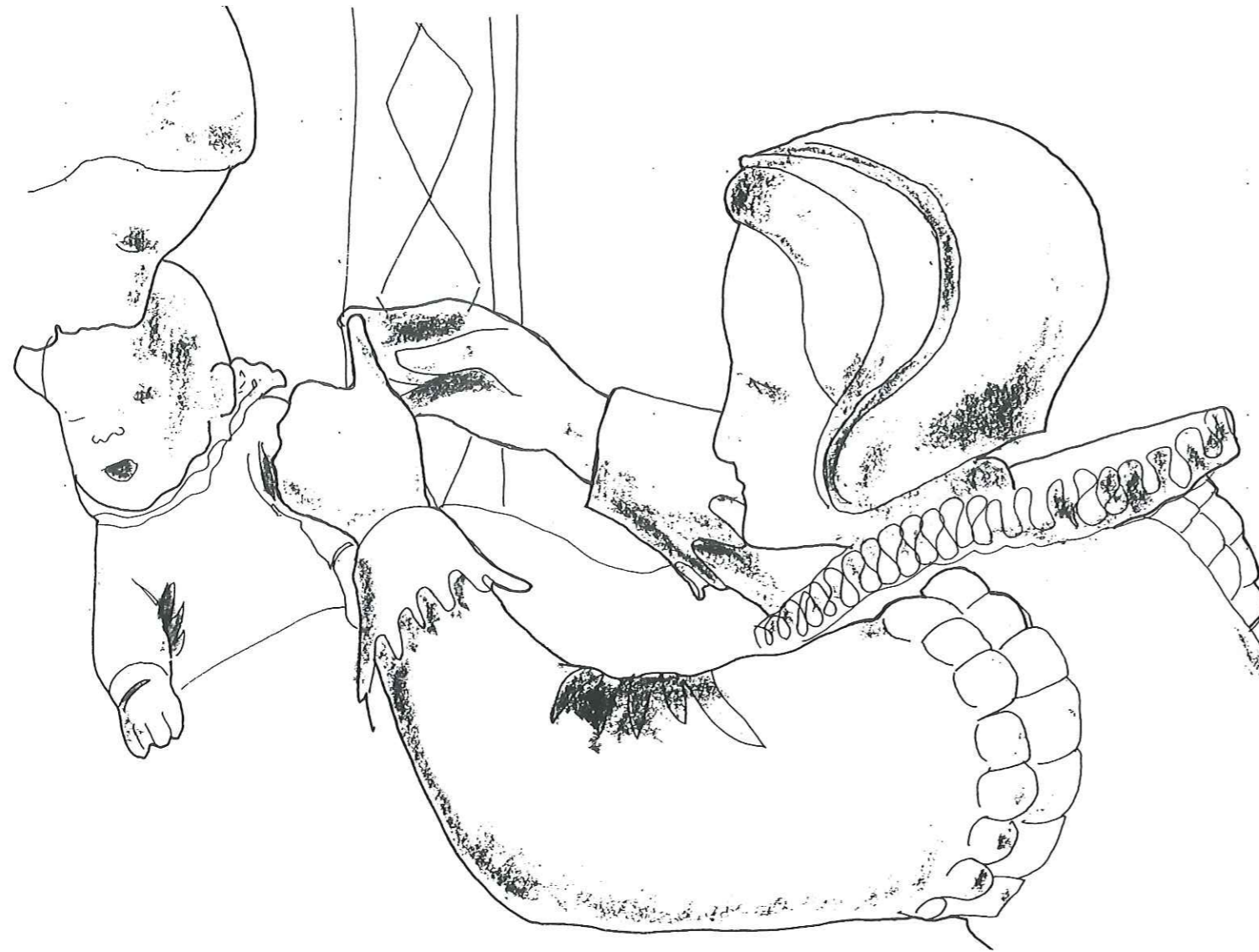
Room Description	Queen Margaret's Bower
Accessed by the north-west turnpike stair. Signed from first floor level	
Theme	The landscape and scenery around Linlithgow Palace
Associated stories and characters	<ul style="list-style-type: none"> * the scenery and landscape surrounding Linlithgow Palace * geographical location of Linlithgow and its choice as a location for an early garrison and later a royal Palace * story associated with Margaret Tudor awaiting the return of James V from the Battle of Flodden in 1513.

Media

Audio Facility	Yes.
Other Comments	Commanding viewpoint.



Linlithgow Palace: engraving from John Slezer, *Theatrum Scotiae* (London, 1693).

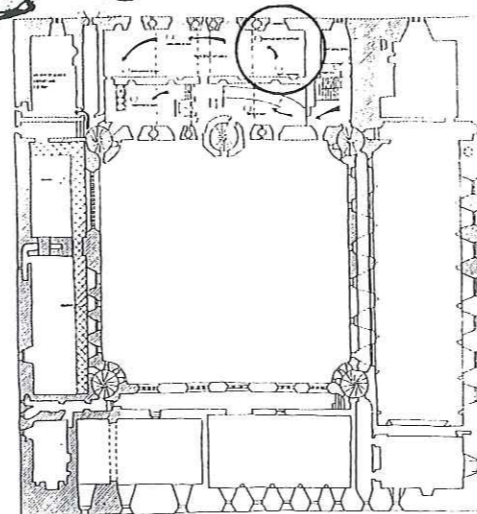


Storyline

Room Description	Exhibition Area
Second Floor Level	
Status: Roofed	
Theme	The Birth of Mary, Queen of Scots 1542
Associated stories and characters	<ul style="list-style-type: none"> * the confinement of Mary of Guise * the death of infant male heirs, the expectancy surrounding the birth of a new heir to James V and the great hopes they pinned on the child - a figurehead for a new Stewart monarchy * James's defeat at the Battle of Solway Moss and his taking to bed at Falkland Palace * Mary's birth * the death of James V * betrothal of Mary to the heir to the English throne.

Media

Date Of Presentation	1542
Reconstruction, Mannequins and Furniture	<ul style="list-style-type: none"> * the area is devoted to a reconstruction of the birth scene of Mary, Queen of Scots in 1542 * a part room set (2 walls) containing mannequins, Mary of Guise-Lorraine (in bed), the baby Mary, Queen of Scots, doctor/midwife and lady-in-waiting * movement effect and animated figures.
Lighting	<ul style="list-style-type: none"> * low level, dramatic, at night time with candle light (electrical) all with concealed cable * intelligent lighting system.
Decoration	<ul style="list-style-type: none"> * specialist lighting effects * walls: wall hangings and timber panelling * ceiling: painted out dark for effect, indication of ornate plasterwork * flooring: oak floorboards.
Audio Facility	Yes.
Other Comments	Suitable for educational activity.

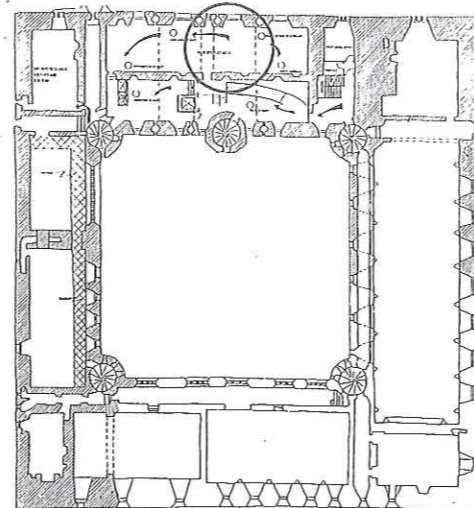


Storyline

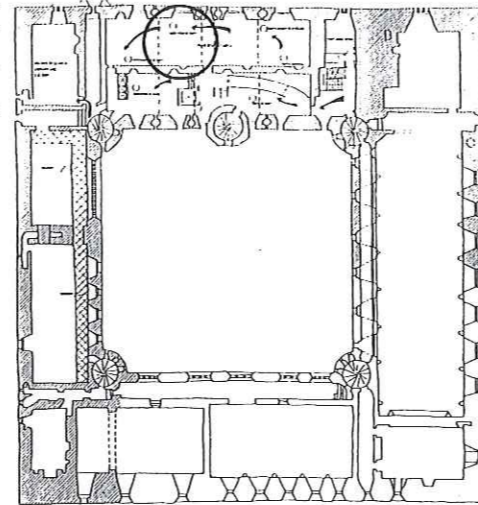
Room Description	Exhibition Area
Second Floor Level	
Status: Roofed	
Theme	Mary's Marriage to the Dauphin of France, 1559
Associated stories and characters	<ul style="list-style-type: none"> * European context of the Protestant Reformation and shows of strength by the Catholic Church. Also the context of the death of Mary Tudor in England and the Protestant Reformation in England * Scottish context of Mary of Guise's resistance to the Protestant revolution in Scotland and her opposition to John Knox. Discussion of Mary of Guise-Lorraine's actions against Protestants in Scotland - the burning of Walter Millan, an 80 year old priest, and the revolts caused by her actions. Also discussion of Mary's granting of senior posts within Scotland to the French and the growing resentment of the Scottish nobility regarding this issue * betrothal of Mary to the French Dauphin creating an image of Mary as a tool for other peoples political ambitions - i.e. the Catholic Church and the powerful Guise-Lorraine family in France * story of Mary sent to France at age six. Present an image of Mary being brought up to be a French Queen who is able to sew beautifully and play musical instruments; essentially portray an image of a girl who is not being brought up to govern or rule * Mary's marriage to the Dauphin * the death of the King of France and the crowning of Mary as Queen of France * the naming of Mary in France as Queen of England and Ireland * the death of Mary's husband, the King of France.

Media

Date Of Presentation	1559
Reconstruction, Mannequins and Furniture	<ul style="list-style-type: none"> * reconstruction of a Drawing Room in a French chateau setting. Mary is seated, sewing by the window with two ladies-in-waiting assisting her * the scene is peaceful, windows open, time of leisure, birds singing.
Lighting	* bright, sunshine through the window.
Decoration	<ul style="list-style-type: none"> * specialist paint effects * walls: wall hangings, painted plaster, walls doors out onto balcony. * ceiling: ornate plasterwork * flooring: oak wood.
Audio Facility	Yes.
Other Comments	Suitable for educational activity.



MARY R

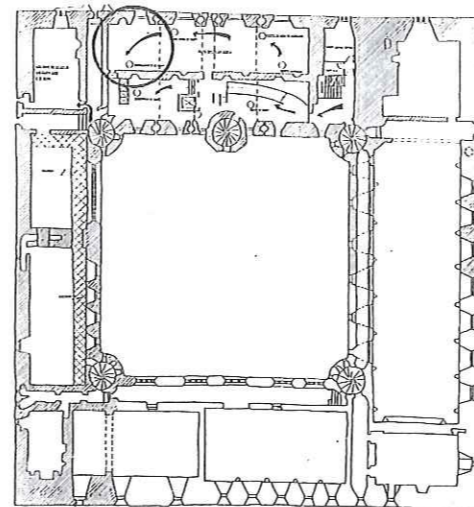


Storyline

Room Description	Exhibition Area
Second Floor Level	
Status: Roofed	
Theme	Mary's Return to Scotland, 1560-1568
Associated stories and characters	<ul style="list-style-type: none"> * Mary welcomed rapturously back to Scotland in Edinburgh * Lord James Stewart's hopes for a future of better relations between Scotland and England through an Anglo-Scots marriage. Mary's eventual marriage to her cousin Darnley, followed by the loss of the support of Lord James * Mary's gradual estrangement from Darnley and his demanding of the Crown Matrimonial * Mary's pregnancy set in the context of growing mistrust of her Catholic sympathies by Scottish Lords culminating in the stabbing of Riccio at Holyrood Palace * the birth of Mary's son, the future James VI * the death of Darnley set in the context of Mary's relationship with Bothwell, her subsequent marriage to him and the further loss of support of her lords.

Media

Date Of Presentation	1560
Reconstruction, Mannequins and Furniture	<ul style="list-style-type: none"> * costumed mannequins of the young Mary descending a ship at Leith with 2 no. lords to meet her * animated movement of Mary.
Lighting	<ul style="list-style-type: none"> * spotlights illuminating the 2 no. lords in low level lighting within generally darkened room * intelligent lighting system.
Decoration	<ul style="list-style-type: none"> * specialist paint effects * walls: timber panelling with wall hangings * ceiling: plaster/painted * flooring: floorboards (dark oak).
Audio Facility	Yes.
Other Comments	Suitable for educational activity.

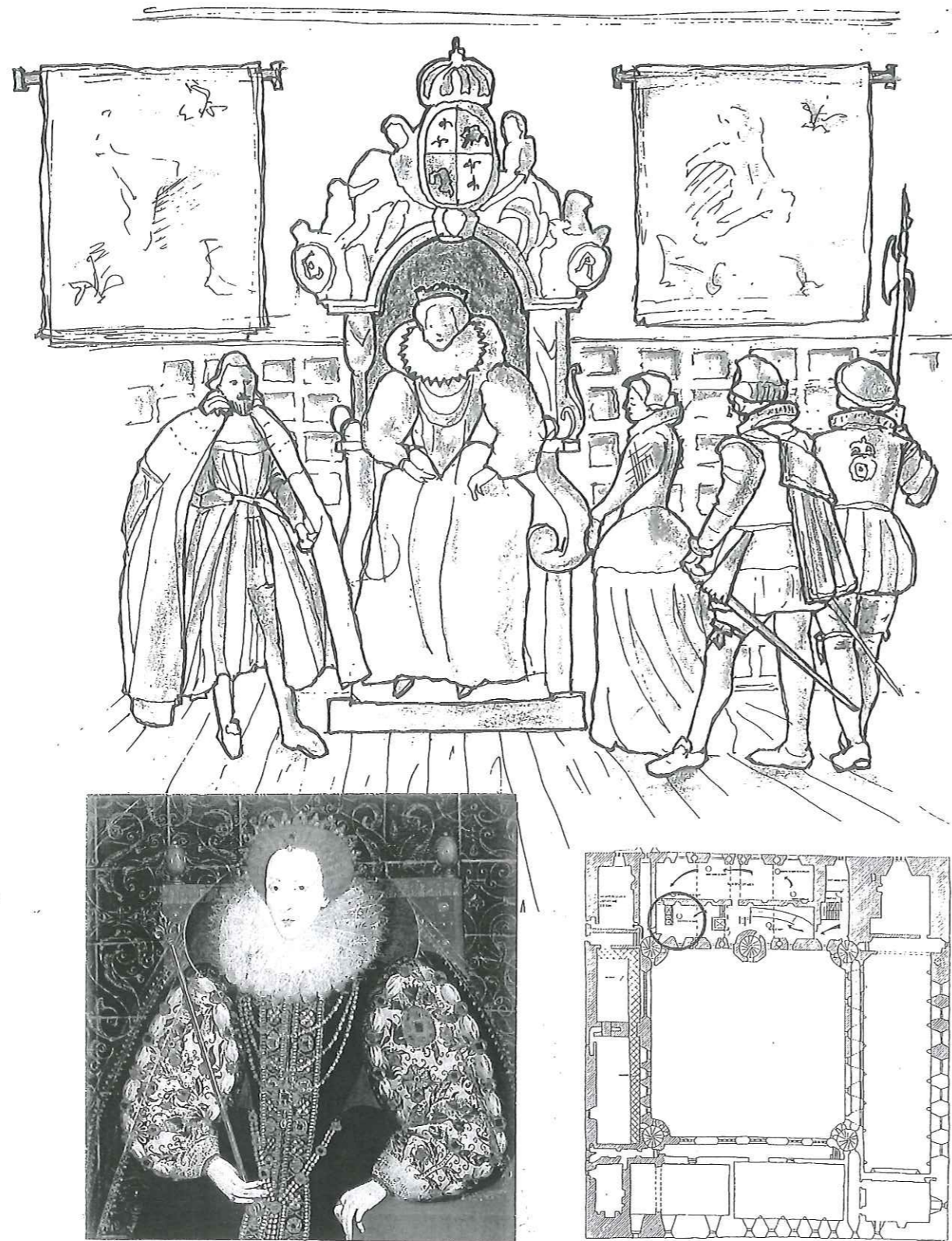


Storyline

Room Description	Exhibition Area
Second Floor Level	
Status: Roofed	
Theme	The Abdication of Mary, Queen of Scots, 1567
Associated stories and characters	<ul style="list-style-type: none"> * Mary's hasty marriage to Bothwell following his divorce and whispered talk of Bothwell's role in the death of Darnley * uprisings against Mary leading to rebellions * Mary's defeat at the Battle of Carberry * imprisonment at Loch Leven Castle * Mary's abdication in 1567 * Mary's escape from Loch Leven, 1568.

Media

Date Of Presentation	1567
Reconstruction, Mannequins and Furniture	<ul style="list-style-type: none"> * a reconstructed tableau containing costumed mannequins of Mary, Queen of Scots, with 2 no. male Scottish guards at Loch Leven Castle. Mary is aged 25 and imprisoned * movement effect.
Lighting	* dramatic spotlight on Mary with the attendants in a lower level of illumination with some shifting lighting.
Decoration	<ul style="list-style-type: none"> * specialist paint effect * walls: spartan - panelling only, as imprisoned * ceiling: plaster, painted simple, plain colour * flooring: floorboards (oak).
Audio Facility	Yes.
Other Comments	Suitable for educational activity.

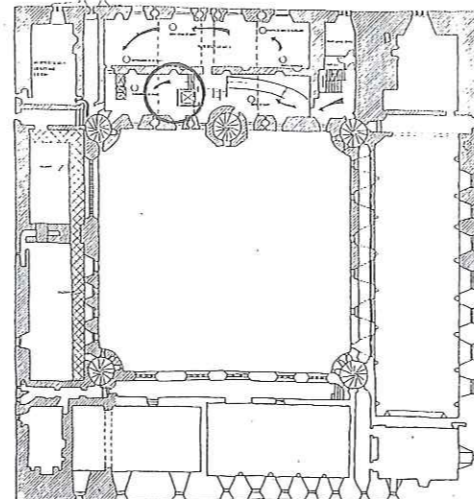


Storyline

Room Description	Exhibition Area
Second Floor Level	
Status: Roofed	
Theme	The Imprisonment Of Mary, Queen of Scots
Associated stories and characters	<ul style="list-style-type: none"> * Mary's imprisonment by the English following her defeat at the Battle of Langside and capture at Workington Hall by English troops * the years of Mary's imprisonment conveyed through her movements around the country to off-set various escape plots * story of James VI's minority, his upbringing by his English tutor, George Buchanan, and his relationship with Elizabeth I * context of increasing Catholic action versus Protestantism and England, with Mary acting as a rallying point, culminating in preparations for the Spanish Armada.

Media

Date Of Presentation	1585
Reconstruction, Mannequins and Furniture	<ul style="list-style-type: none"> * a reconstructed audience/chamber court scene containing costume mannequins of Elizabeth I seated on the throne, with 1 no. lady-in-waiting and 2 no. members of the Privy Council * animated movements.
Lighting	* subdued lighting, spotlight on Elizabeth
Decoration	<ul style="list-style-type: none"> * specialist paint effects * walls: wall hangings and timber panelling * ceiling: decorative plasterwork * flooring: oak floorboards.
Audio Facility	Yes.
Other Comments	Suitable for educational activity.



Storyline

Room Description	Exhibition Area
Second Floor Level	
Status: Roofed	
Theme	The Execution of Mary, Queen of Scots, 1587
Associated stories and characters	<p>* Mary's execution in 1587 with those present including the Earl of Shrewsbury, the Earl of Kent, Sir Amyas Paulet, Sir Drue Drury, the Dean of Peterborough, two ladies in waiting who help Mary to disrobe (Jane Kennedy and Elizabeth Curle), a rank of soldiers surrounding stage and around 300 common folk and local dignitaries</p> <p>* the death of Elizabeth I and the Coronation of Mary's son as James I of England.</p>

Media

Date Of Presentation	1587
Reconstruction, Mannequins and Furniture	<p>* this area to show reconstruction of the scene with 10 no. costumed mannequins.</p> <ul style="list-style-type: none"> - Mary, Queen of Scots - the executioner with axe and block - 2 no. ladies-in-waiting - Jane Kennedy and Elizabeth Curle - Earl of Shrewsbury - Earl of Kent - Sir Arryas Paulet - Sir Drue Drury - Dean of Peterborough - 1 no. soldier <p>* animated movement of a number of figures</p> <p>* the only other furniture being one chair, draped with her cloak and crucifix and a cushion to kneel on.</p>
Lighting	<p>* dramatic shafts of light from spotlighting (emulating daylight) illuminating the otherwise dark scene</p> <p>* specialist intelligent lighting system.</p>
Decoration	<p>* specialist paint effect</p> <ul style="list-style-type: none"> * walls: dark and draped with dark grey wall hangings * ceiling: painted out (double height room) * flooring: floorboards (dark oak).
Audio Facility	Yes.
Other Comments	Suitable for educational activity.